

ARG63237 anti-SOCS4 antibody

Package: 100 µg
Store at: -20°C

Summary

Product Description	Goat Polyclonal antibody recognizes SOCS4
Tested Reactivity	Hu
Predict Reactivity	Cow, Pig
Tested Application	IHC-P
Specificity	Both variants represent identical protein (NP_543143.1 and NP_955453.1).
Host	Goat
Clonality	Polyclonal
Isotype	IgG
Target Name	SOCS4
Species	Human
Immunogen	C-SKVRVLRIDAPEQQ
Conjugation	Un-conjugated
Alternate Names	SOCS7; SOCS-7; Suppressor of cytokine signaling 4; Suppressor of cytokine signaling 7; SOCS-4

Application Instructions

Application table	Application	Dilution
	IHC-P	3 - 6 µg/ml

Application Note IHC-P: Antigen Retrieval: Steam tissue section in Citrate buffer (pH 6.0).
* The dilutions indicate recommended starting dilutions and the optimal dilutions or concentrations should be determined by the scientist.

Properties

Form	Liquid
Purification	Purified from goat serum by ammonium sulphate precipitation followed by antigen affinity chromatography using the immunizing peptide.
Buffer	Tris saline (pH 7.3), 0.02% Sodium azide and 0.5% BSA
Preservative	0.02% Sodium azide
Stabilizer	0.5% BSA
Concentration	0.5 mg/ml
Storage instruction	For continuous use, store undiluted antibody at 2-8°C for up to a week. For long-term storage, aliquot and store at -20°C or below. Storage in frost free freezers is not recommended. Avoid repeated freeze/thaw cycles. Suggest spin the vial prior to opening. The antibody solution should be gently mixed before use.

Note For laboratory research only, not for drug, diagnostic or other use.

Bioinformation

Database links [GeneID: 122809 Human](#)

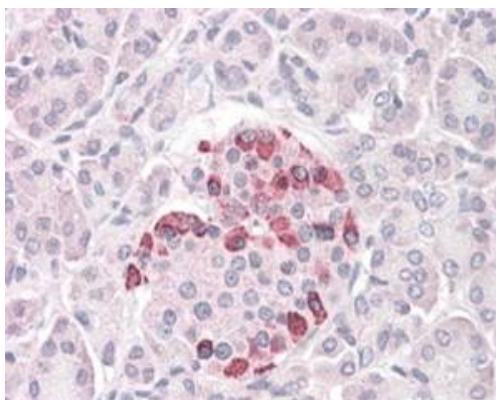
[Swiss-port # Q8WXH5 Human](#)

Background The protein encoded by this gene contains a SH2 domain and a SOCS BOX domain. The protein thus belongs to the suppressor of cytokine signaling (SOCS), also known as STAT-induced STAT inhibitor (SSI), protein family. SOCS family members are known to be cytokine-inducible negative regulators of cytokine signaling. Two alternatively spliced transcript variants encoding the same protein have been found for this gene. [provided by RefSeq, Jul 2008]

Research Area Signaling Transduction antibody

Calculated Mw 51 kDa

Images



ARG63237 anti-SOCS4 antibody IHC-P image

Immunohistochemistry: paraffin embedded Human Pancreas. (Steamed antigen retrieval with citrate buffer pH 6) stained with ARG63237 anti-SOCS4 antibody at 3.8 µg/ml dilution followed by AP-staining.