

ARG63221 anti-ARL4A antibody

Package: 100 µg
Store at: -20°C

Summary

Product Description	Goat Polyclonal antibody recognizes ARL4A
Tested Reactivity	Hu
Predict Reactivity	Ms, Rat, Pig
Tested Application	WB
Specificity	This is also expected to react with a hypothetical human protein, XP_166703, and a hypothetical mouse protein, AAH03725 - both very similar to ARL4.
Host	Goat
Clonality	Polyclonal
Isotype	IgG
Target Name	ARL4A
Species	Human
Immunogen	GNGLSDQTSILSN-C
Conjugation	Un-conjugated
Alternate Names	ARL4; ADP-ribosylation factor-like protein 4A

Application Instructions

Application table	Application	Dilution
	WB	1 - 3 µg/ml
Application Note	WB: Recommend incubate at RT for 1h. * The dilutions indicate recommended starting dilutions and the optimal dilutions or concentrations should be determined by the scientist.	

Properties

Form	Liquid
Purification	Purified from goat serum by ammonium sulphate precipitation followed by antigen affinity chromatography using the immunizing peptide.
Buffer	Tris saline (pH 7.3), 0.02% Sodium azide and 0.5% BSA
Preservative	0.02% Sodium azide
Stabilizer	0.5% BSA
Concentration	0.5 mg/ml
Storage instruction	For continuous use, store undiluted antibody at 2-8°C for up to a week. For long-term storage, aliquot and store at -20°C or below. Storage in frost free freezers is not recommended. Avoid repeated freeze/thaw cycles. Suggest spin the vial prior to opening. The antibody solution should be gently mixed

before use.

Note

For laboratory research only, not for drug, diagnostic or other use.

Bioinformation

Database links

[GeneID: 10124 Human](#)

[Swiss-port # P40617 Human](#)

Background

ADP-ribosylation factor-like 4A is a member of the ADP-ribosylation factor family of GTP-binding proteins. ARL4A is similar to ARL4C and ARL4D and each has a nuclear localization signal and an unusually high guanine nucleotide exchange rate. ARL4A is located in both the nuclear and extranuclear cell compartments. Multiple transcript variants encoding the same protein have been found for this gene. [provided by RefSeq, Jul 2008]

Research Area

Signaling Transduction antibody

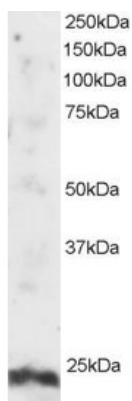
Calculated Mw

23 kDa

PTM

Myristoylated.

Images



ARG63221 anti-ARL4A antibody WB image

Western Blot: Human Testis lysate (RIPA buffer, 30µg total protein per lane) stained with ARG63221 anti-ARL4A antibody at 2 µg/ml dilution.