

## ARG63181 anti-TBL1X / TBL1XR1 antibody

Package: 100 µg  
Store at: -20°C

### Summary

Product Description	Goat Polyclonal antibody recognizes TBL1X / TBL1XR1
Tested Reactivity	Hu
Predict Reactivity	Ms, Rat, Cow, Dog
Tested Application	IHC-P
Specificity	This antibody is also expected to recognise the human protein TBLR1 (NP_078941), which is very similar. Variants (NP_005638.1; NP_001132938.1) encode isoform a (TBL1X) and variants (NP_001132939.1; NP_001132940.1) encode isoform b (TBLX1).
Host	Goat
Clonality	Polyclonal
Isotype	IgG
Target Name	TBL1X / TBL1XR1
Species	Human
Immunogen	SASDGSVCVLDLRK
Conjugation	Un-conjugated
Alternate Names	Transducin beta-like protein 1X; Transducin-beta-like protein 1, X-linked; EBI; SMAP55; TBL1; F-box-like/WD repeat-containing protein TBL1X

### Application Instructions

Application table	Application	Dilution
	IHC-P	4 - 6 µg/ml

**Application Note** IHC-P: Antigen Retrieval: Steam tissue section in Tris/EDTA buffer (pH 9.0).  
\* The dilutions indicate recommended starting dilutions and the optimal dilutions or concentrations should be determined by the scientist.

### Properties

Form	Liquid
Purification	Purified from goat serum by ammonium sulphate precipitation followed by antigen affinity chromatography using the immunizing peptide.
Buffer	Tris saline (pH 7.3), 0.02% Sodium azide and 0.5% BSA
Preservative	0.02% Sodium azide
Stabilizer	0.5% BSA
Concentration	0.5 mg/ml
Storage instruction	For continuous use, store undiluted antibody at 2-8°C for up to a week. For long-term storage, aliquot

and store at -20°C or below. Storage in frost free freezers is not recommended. Avoid repeated freeze/thaw cycles. Suggest spin the vial prior to opening. The antibody solution should be gently mixed before use.

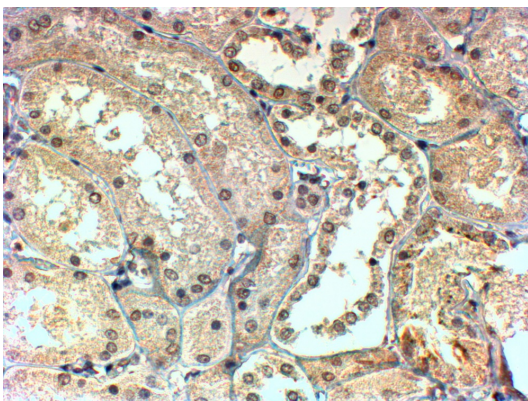
**Note** For laboratory research only, not for drug, diagnostic or other use.

## Bioinformation

---

Database links	<a href="#">GeneID: 6907 Human</a> <a href="#">Swiss-port # O60907 Human</a>
Gene Symbol	TBL1X
Gene Full Name	transducin (beta)-like 1X-linked
Background	The protein encoded by this gene has sequence similarity with members of the WD40 repeat-containing protein family. The WD40 group is a large family of proteins, which appear to have a regulatory function. It is believed that the WD40 repeats mediate protein-protein interactions and members of the family are involved in signal transduction, RNA processing, gene regulation, vesicular trafficking, cytoskeletal assembly and may play a role in the control of cytotypic differentiation. This encoded protein is found as a subunit in corepressor SMRT (silencing mediator for retinoid and thyroid receptors) complex along with histone deacetylase 3 protein. This gene is located adjacent to the ocular albinism gene and it is thought to be involved in the pathogenesis of the ocular albinism with late-onset sensorineural deafness phenotype. Four transcript variants encoding two different isoforms have been found for this gene. This gene is highly similar to the Y chromosome TBL1Y gene. [provided by RefSeq, Nov 2008]
Function	F-box-like protein involved in the recruitment of the ubiquitin/19S proteasome complex to nuclear receptor-regulated transcription units. Plays an essential role in transcription activation mediated by nuclear receptors. Probably acts as integral component of corepressor complexes that mediates the recruitment of the 19S proteasome complex, leading to the subsequent proteasomal degradation of transcription repressor complexes, thereby allowing cofactor exchange. [UniProt]
Research Area	Cancer antibody; Gene Regulation antibody; Metabolism antibody; Neuroscience antibody
Calculated Mw	62 kDa

## Images



ARG63181 anti-TBL1X / TBL1XR1 antibody IHC-P image

Immunohistochemistry: Paraffin-embedded Human kidney tissue. Antigen Retrieval: Steam tissue section in Tris/EDTA buffer (pH 9.0). The tissue section was stained with ARG63181 anti-TBL1X / TBL1XR1 antibody at 4 µg/ml dilution followed by HRP-staining.