

ARG63178 anti-ELMO2 antibody

Package: 100 µg
Store at: -20°C

Summary

Product Description	Goat Polyclonal antibody recognizes ELMO2
Tested Reactivity	Hu
Predict Reactivity	Ms, Rat, Cow, Dog, Pig
Tested Application	IHC-P, WB
Specificity	NP_877496.1 and NP_573403.1 are variants that encode the same protein.
Host	Goat
Clonality	Polyclonal
Isotype	IgG
Target Name	ELMO2
Species	Human
Immunogen	C-PKEPSSYDFVYHYG
Conjugation	Un-conjugated
Alternate Names	CED12; Protein ced-12 homolog A; hCed-12A; Engulfment and cell motility protein 2; CED-12; ELMO-2

Application Instructions

Application table	Application	Dilution
	IHC-P	3 - 6 µg/ml
	WB	1 - 3 µg/ml
Application Note	IHC-P: Antigen Retrieval: Steam tissue section in Citrate buffer (pH 6.0). WB: Recommend incubate at RT for 1h. * The dilutions indicate recommended starting dilutions and the optimal dilutions or concentrations should be determined by the scientist.	

Properties

Form	Liquid
Purification	Purified from goat serum by ammonium sulphate precipitation followed by antigen affinity chromatography using the immunizing peptide.
Buffer	Tris saline (pH 7.3), 0.02% Sodium azide and 0.5% BSA
Preservative	0.02% Sodium azide
Stabilizer	0.5% BSA
Concentration	0.5 mg/ml
Storage instruction	For continuous use, store undiluted antibody at 2-8°C for up to a week. For long-term storage, aliquot and store at -20°C or below. Storage in frost free freezers is not recommended. Avoid repeated

freeze/thaw cycles. Suggest spin the vial prior to opening. The antibody solution should be gently mixed before use.

Note

For laboratory research only, not for drug, diagnostic or other use.

Bioinformation

Database links

[GeneID: 63916 Human](#)

[Swiss-port # Q96JJ3 Human](#)

Background

The protein encoded by this gene interacts with the dedicator of cyto-kinesin 1 protein. Similarity to a *C. elegans* protein suggests that this protein may function in phagocytosis of apoptotic cells and in cell migration. Alternative splicing results in multiple transcript variants encoding the same protein. [provided by RefSeq, Jul 2008]

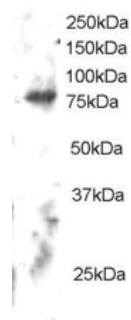
Research Area

Cell Biology and Cellular Response antibody; Cell Death antibody; Metabolism antibody

Calculated Mw

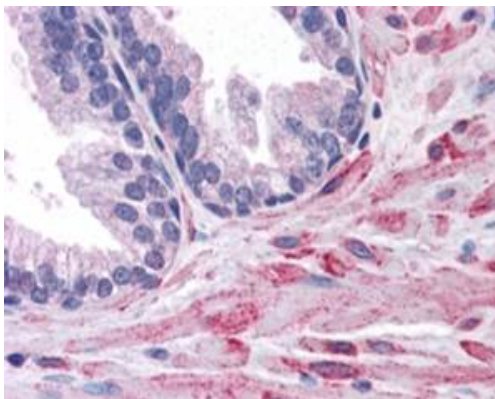
83 kDa

Images



ARG63178 anti-ELMO2 antibody WB image

Western Blot: Human Brain lysate (RIPA buffer, 30µg total protein per lane) stained with ARG63178 anti-ELMO2 antibody at 2 µg/ml dilution.



ARG63178 anti-ELMO2 antibody IHC-P image

Immunohistochemistry: paraffin embedded Human Prostate. (Steamed antigen retrieval with citrate buffer pH 6) stained with ARG63178 anti-ELMO2 antibody at 3.8 µg/ml dilution followed by AP-staining.