

## ARG63169 anti-SEC61A1 antibody

Package: 100 µg  
Store at: -20°C

### Summary

Product Description	Goat Polyclonal antibody recognizes SEC61A1
Tested Reactivity	Hu
Predict Reactivity	Cow, Dog, Pig
Tested Application	IHC-P, WB
Host	Goat
Clonality	Polyclonal
Isotype	IgG
Target Name	SEC61A1
Species	Human
Immunogen	C-KEQSEVGSMSGALLF
Conjugation	Un-conjugated
Alternate Names	Sec61 alpha-1; Protein transport protein Sec61 subunit alpha isoform 1; SEC61; HSEC61; SEC61A

### Application Instructions

Application table	Application	Dilution
	IHC-P	Assay - dependent
	WB	0.3 - 1 µg/ml
Application Note	WB: Recommend incubate at RT for 1h. IHC-P: Antigen Retrieval: Steam tissue section in Citrate buffer (pH 6.0). * The dilutions indicate recommended starting dilutions and the optimal dilutions or concentrations should be determined by the scientist.	

### Properties

Form	Liquid
Purification	Purified from goat serum by ammonium sulphate precipitation followed by antigen affinity chromatography using the immunizing peptide.
Buffer	Tris saline (pH 7.3), 0.02% Sodium azide and 0.5% BSA
Preservative	0.02% Sodium azide
Stabilizer	0.5% BSA
Concentration	0.5 mg/ml
Storage instruction	For continuous use, store undiluted antibody at 2-8°C for up to a week. For long-term storage, aliquot and store at -20°C or below. Storage in frost free freezers is not recommended. Avoid repeated freeze/thaw cycles. Suggest spin the vial prior to opening. The antibody solution should be gently mixed

before use.

Note

For laboratory research only, not for drug, diagnostic or other use.

## Bioinformation

---

Database links

[GeneID: 29927 Human](#)

[Swiss-port # P61619 Human](#)

Background

The protein encoded by this gene belongs to the SECY/SEC61- alpha family. It appears to play a crucial role in the insertion of secretory and membrane polypeptides into the endoplasmic reticulum. This protein found to be tightly associated with membrane-bound ribosomes, either directly or through adaptor proteins. This gene encodes an alpha subunit of the heteromeric SEC61 complex, which also contains beta and gamma subunits. [provided by RefSeq, Jul 2008]

Research Area

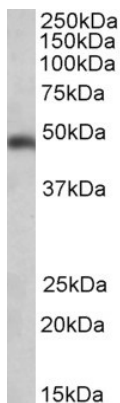
Signaling Transduction antibody

Calculated Mw

52 kDa

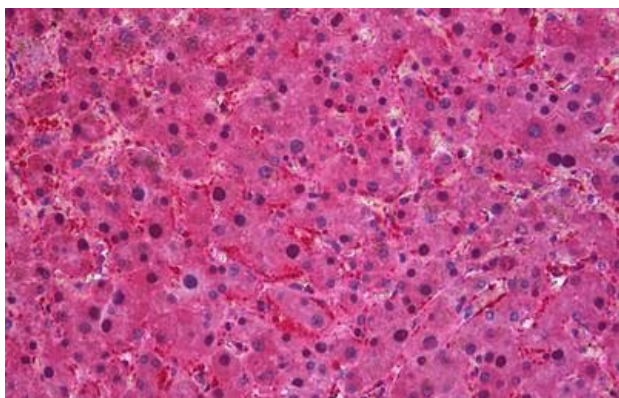
## Images

---



ARG63169 anti-SEC61A1 antibody WB image

Western Blot: Human Brain (Cerebellum) lysate (35 µg protein in RIPA buffer) stained with ARG63169 anti-SEC61A1 antibody at 0.3 µg/ml dilution.



ARG63169 anti-SEC61A1 antibody IHC-P image

Immunohistochemistry: Paraffin-embedded Human liver tissue. Antigen Retrieval: Steam tissue section in Citrate buffer (pH 6.0). The tissue section was stained with ARG63169 anti-SEC61A1 antibody at 3.75 µg/ml dilution followed by AP-staining.