

ARG63165 anti-BIF1 / SH3GLB1 antibody

Package: 100 µg
Store at: -20°C

Summary

Product Description	Goat Polyclonal antibody recognizes BIF1 / SH3GLB1
Tested Reactivity	Hu
Predict Reactivity	Ms, Rat, Cow, Dog
Tested Application	IHC-P, WB
Host	Goat
Clonality	Polyclonal
Isotype	IgG
Target Name	BIF1 / SH3GLB1
Species	Human
Immunogen	C-QKGGKVPITYLELLN
Conjugation	Un-conjugated
Alternate Names	SH3 domain-containing GRB2-like protein B1; Bif-1; Endophilin-B1; dj612B15.2; Bax-interacting factor 1; CGI-61; PPP1R70

Application Instructions

Application table	Application	Dilution
	IHC-P	2.5 µg/ml
	WB	0.3 - 1.0 µg/ml
Application Note	WB: Recommend incubate at RT for 1h. IHC-P: Antigen Retrieval: Steam tissue section in Citrate buffer (pH 6.0). * The dilutions indicate recommended starting dilutions and the optimal dilutions or concentrations should be determined by the scientist.	

Properties

Form	Liquid
Purification	Purified from goat serum by ammonium sulphate precipitation followed by antigen affinity chromatography using the immunizing peptide.
Buffer	Tris saline (pH 7.3), 0.02% Sodium azide and 0.5% BSA
Preservative	0.02% Sodium azide
Stabilizer	0.5% BSA
Concentration	0.5 mg/ml
Storage instruction	For continuous use, store undiluted antibody at 2-8°C for up to a week. For long-term storage, aliquot and store at -20°C or below. Storage in frost free freezers is not recommended. Avoid repeated

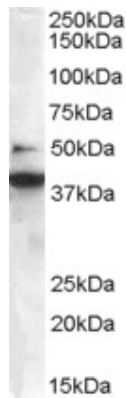
freeze/thaw cycles. Suggest spin the vial prior to opening. The antibody solution should be gently mixed before use.

Note For laboratory research only, not for drug, diagnostic or other use.

Bioinformation

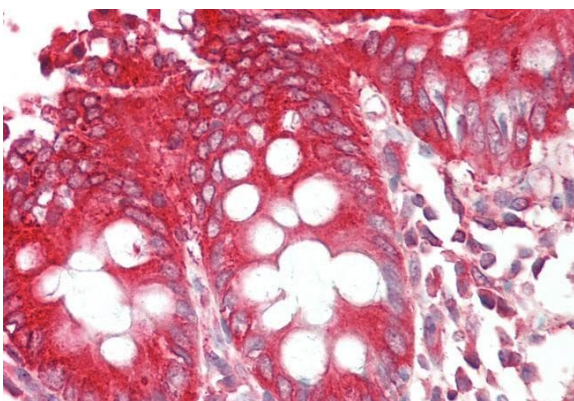
Database links	GeneID: 51100 Human Swiss-port # Q9Y371 Human
Background	This gene encodes a SRC homology 3 domain-containing protein. The encoded protein interacts with the proapoptotic member of the Bcl-2 family, Bcl-2-associated X protein (Bax) and may be involved in regulating apoptotic signaling pathways. This protein may also be involved in maintaining mitochondrial morphology. Alternate splicing results in multiple transcript variants. [provided by RefSeq, Sep 2011]
Research Area	Cell Biology and Cellular Response antibody; Cell Death antibody; Metabolism antibody
Calculated Mw	41 kDa
PTM	Phosphorylated at Thr-145 by CDK5; this phosphorylation is required for autophagy induction in starved neurons and facilitates homodimerization.

Images



ARG63165 anti-BIF1 / SH3GLB1 antibody WB image

Western blot: Jurkat lysate (RIPA buffer, 35 µg total protein per lane) stained with ARG63165 anti-BIF1 / SH3GLB1 antibody at 0.3 µg/ml dilution.



ARG63165 anti-BIF1 / SH3GLB1 antibody IHC-P image

Immunohistochemistry: Paraffin-embedded Human colon tissue. Antigen Retrieval: Steam tissue section in Citrate buffer (pH 6.0). The tissue section was stained with ARG63165 anti-BIF1 / SH3GLB1 antibody at 2.5 µg/ml dilution followed by AP-staining.