

ARG63145
anti-Bcl 7A antibodyPackage: 100 µg
Store at: -20°C

Summary

Product Description	Goat Polyclonal antibody recognizes Bcl 7A
Tested Reactivity	Hu
Predict Reactivity	Ms, Rat, Cow, Dog, Pig
Tested Application	FACS, ICC/IF, WB
Specificity	This antibody is expected to recognize both reported isoforms (NP_066273.1; NP_001019979.1).
Host	Goat
Clonality	Polyclonal
Isotype	IgG
Target Name	Bcl 7A
Species	Human
Immunogen	C-MKLEASQQNSEEM
Conjugation	Un-conjugated
Alternate Names	B-cell CLL/lymphoma 7 protein family member A; BCL7

Application Instructions

Application table	Application	Dilution
	FACS	10 µg/ml
	ICC/IF	10 µg/ml
	WB	1 - 3 µg/ml
Application Note	WB: Recommend incubate at RT for 1h. * The dilutions indicate recommended starting dilutions and the optimal dilutions or concentrations should be determined by the scientist.	

Properties

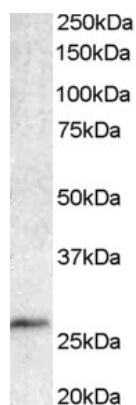
Form	Liquid
Purification	Purified from goat serum by ammonium sulphate precipitation followed by antigen affinity chromatography using the immunizing peptide.
Buffer	Tris saline (pH 7.3), 0.02% Sodium azide and 0.5% BSA
Preservative	0.02% Sodium azide
Stabilizer	0.5% BSA
Concentration	0.5 mg/ml

Storage instruction	For continuous use, store undiluted antibody at 2-8°C for up to a week. For long-term storage, aliquot and store at -20°C or below. Storage in frost free freezers is not recommended. Avoid repeated freeze/thaw cycles. Suggest spin the vial prior to opening. The antibody solution should be gently mixed before use.
Note	For laboratory research only, not for drug, diagnostic or other use.

Bioinformation

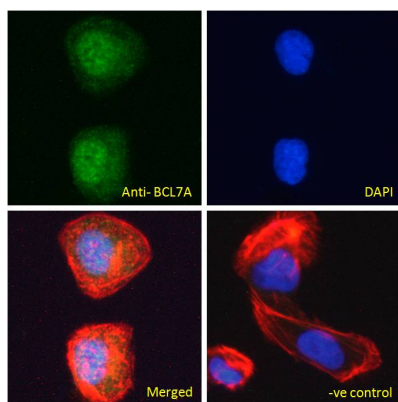
Database links	GeneID: 605 Human Swiss-port # Q4VC05 Human
Background	This gene is directly involved, with Myc and IgH, in a three-way gene translocation in a Burkitt lymphoma cell line. As a result of the gene translocation, the N-terminal region of the gene product is disrupted, which is thought to be related to the pathogenesis of a subset of high-grade B cell non-Hodgkin Lymphoma. The N-terminal segment involved in the translocation includes the region that shares a strong sequence similarity with those of BCL7B and BCL7C. Two transcript variants encoding different isoforms have been found for this gene. [provided by RefSeq, Jul 2008]
Research Area	Cancer antibody; Cell Biology and Cellular Response antibody; Cell Death antibody; Metabolism antibody
Calculated Mw	23 kDa

Images



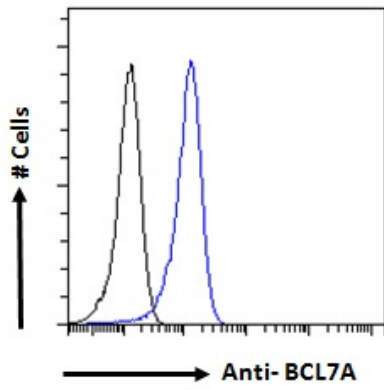
ARG63145 anti-Bcl 7A antibody WB image

Western blot: Human Lymphnode lysate (RIPA buffer, 35 µg total protein per lane) stained with ARG63145 anti-Bcl 7A antibody at 1 µg/ml dilution.



ARG63145 anti-Bcl 7A antibody ICC/IF image

Immunofluorescence: Paraformaldehyde fixed U2OS cells permeabilized with 0.15% Triton. Cells were stained with ARG63145 anti-Bcl 7A antibody (green) at 10 µg/ml dilution for 1 hour. DAPI (blue) for nuclear staining. Phalloidin (red) for Actin filaments staining. Negative control: Unimmunized goat IgG (green) at 10 µg/ml dilution.



ARG63145 anti-Bcl 7A antibody FACS image

Flow Cytometry: Paraformaldehyde-fixed Daudi cells permeabilized with 0.5% Triton. Cells were stained with ARG63145 anti-Bcl 7A antibody (blue line) at 10 $\mu\text{g}/\text{ml}$ dilution for 1 hour, followed by incubation with Alexa FluorR 488 labelled secondary antibody. IgG control: Unimmunized goat IgG (black line).