

ARG63132 anti-ORC3L antibody

Package: 100 µg
Store at: -20°C

Summary

Product Description	Goat Polyclonal antibody recognizes ORC3L
Tested Reactivity	Hu
Predict Reactivity	Ms, Rat, Cow, Dog
Tested Application	IHC-P, WB
Specificity	This antibody is expected to recognize both reported isoforms (NP_862820.1 and NP_036513.2).
Host	Goat
Clonality	Polyclonal
Isotype	IgG
Target Name	ORC3L
Species	Human
Immunogen	QKTDHVARLTWGGC
Conjugation	Un-conjugated
Alternate Names	LAT; Origin recognition complex subunit Latheo; ORC3L; LATHEO; Origin recognition complex subunit 3

Application Instructions

Application table	Application	Dilution
	IHC-P	3 - 5 µg/ml
	WB	1 - 3 µg/ml
Application Note	WB: Recommend incubate at RT for 1h. IHC-P: Antigen Retrieval: Steam tissue section in Citrate buffer (pH 6.0). * The dilutions indicate recommended starting dilutions and the optimal dilutions or concentrations should be determined by the scientist.	

Properties

Form	Liquid
Purification	Purified from goat serum by ammonium sulphate precipitation followed by antigen affinity chromatography using the immunizing peptide.
Buffer	Tris saline (pH 7.3), 0.02% Sodium azide and 0.5% BSA
Preservative	0.02% Sodium azide
Stabilizer	0.5% BSA
Concentration	0.5 mg/ml
Storage instruction	For continuous use, store undiluted antibody at 2-8°C for up to a week. For long-term storage, aliquot and store at -20°C or below. Storage in frost free freezers is not recommended. Avoid repeated

freeze/thaw cycles. Suggest spin the vial prior to opening. The antibody solution should be gently mixed before use.

Note

For laboratory research only, not for drug, diagnostic or other use.

Bioinformation

Database links

[GeneID: 23595 Human](#)

[Swiss-port # Q9UBD5 Human](#)

Background

The origin recognition complex (ORC) is a highly conserved six subunits protein complex essential for the initiation of the DNA replication in eukaryotic cells. Studies in yeast demonstrated that ORC binds specifically to origins of replication and serves as a platform for the assembly of additional initiation factors such as Cdc6 and Mcm proteins. The protein encoded by this gene is a subunit of the ORC complex. Studies of a similar gene in *Drosophila* suggested a possible role of this protein in neuronal proliferation and olfactory memory. Alternatively spliced transcript variants encoding distinct isoforms have been reported for this gene. [provided by RefSeq, Jul 2008]

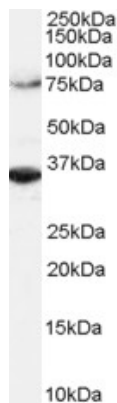
Research Area

Gene Regulation antibody

Calculated Mw

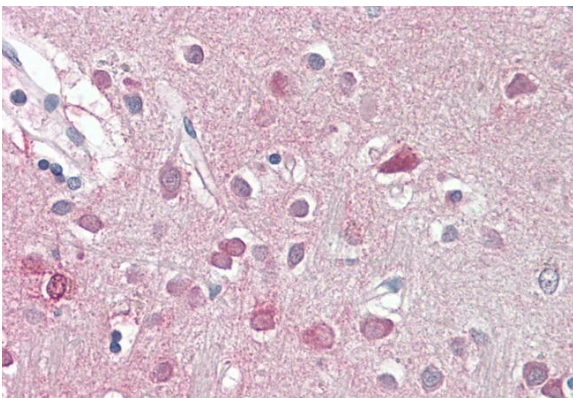
82 kDa

Images



ARG63132 anti-ORC3L antibody WB image

Western Blot: HeLa lysate (RIPA buffer, 1.4E5 cells per lane) stained with ARG63132 anti-ORC3L antibody at 2 µg/ml dilution.



ARG63132 anti-ORC3L antibody IHC-P image

Immunohistochemistry: Paraffin-embedded Human cortex tissue. Antigen Retrieval: Steam tissue section in Citrate buffer (pH 6.0). The tissue section was stained with ARG63132 anti-ORC3L antibody at 3.75 µg/ml dilution followed by AP-staining.