

ARG63128 anti-PPP2R5E antibody

Package: 100 µg
Store at: -20°C

Summary

Product Description	Goat Polyclonal antibody recognizes PPP2R5E
Tested Reactivity	Hu, Ms, Rat
Predict Reactivity	Cow, Dog
Tested Application	WB
Host	Goat
Clonality	Polyclonal
Isotype	IgG
Target Name	PPP2R5E
Species	Human
Immunogen	C-LKRGLRRDGIIPT
Conjugation	Un-conjugated
Alternate Names	PP2A B subunit isoform R5-epsilon; PP2A B subunit isoform PR61-epsilon; PP2A B subunit isoform B56-epsilon; PP2A B subunit isoform B ¹ -epsilon; Serine/threonine-protein phosphatase 2A 56 kDa regulatory subunit epsilon isoform

Application Instructions

Application table	Application	Dilution
	WB	0.1 - 0.3 µg/ml
Application Note	WB: Recommend incubate at RT for 1h. * The dilutions indicate recommended starting dilutions and the optimal dilutions or concentrations should be determined by the scientist.	

Properties

Form	Liquid
Purification	Purified from goat serum by ammonium sulphate precipitation followed by antigen affinity chromatography using the immunizing peptide.
Buffer	Tris saline (pH 7.3), 0.02% Sodium azide and 0.5% BSA
Preservative	0.02% Sodium azide
Stabilizer	0.5% BSA
Concentration	0.5 mg/ml
Storage instruction	For continuous use, store undiluted antibody at 2-8°C for up to a week. For long-term storage, aliquot and store at -20°C or below. Storage in frost free freezers is not recommended. Avoid repeated freeze/thaw cycles. Suggest spin the vial prior to opening. The antibody solution should be gently mixed before use.

Note

For laboratory research only, not for drug, diagnostic or other use.

Bioinformation

Database links

[GeneID: 26932 Mouse](#)

[GeneID: 5529 Human](#)

[Swiss-port # Q16537 Human](#)

[Swiss-port # Q61151 Mouse](#)

Background

The product of this gene belongs to the phosphatase 2A regulatory subunit B family. Protein phosphatase 2A is one of the four major Ser/Thr phosphatases, and it is implicated in the negative control of cell growth and division. It consists of a common heteromeric core enzyme, which is composed of a catalytic subunit and a constant regulatory subunit, that associates with a variety of regulatory subunits. The B regulatory subunit might modulate substrate selectivity and catalytic activity. This gene encodes an epsilon isoform of the regulatory subunit B56 subfamily. [provided by RefSeq, Jul 2008]

Research Area

Neuroscience antibody; Signaling Transduction antibody

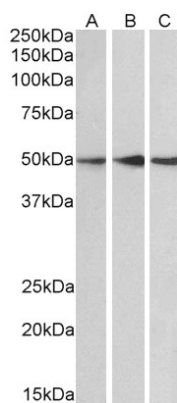
Calculated Mw

55 kDa

PTM

Phosphorylated on serine residues.

Images



ARG63128 anti-PPP2R5E antibody WB image

Western blot: 35 µg of Human cerebellum (A), Mouse brain (B) and Rat brain (C) lysates (in RIPA buffer) stained with ARG63128 anti-PPP2R5E antibody at 0.1 µg/ml dilution and incubated at RT for 1 hour.