

## ARG63020 anti-HLA E antibody [MEM-E/08]

Package: 100 µg  
Store at: -20°C

### Summary

Product Description	Mouse Monoclonal antibody [MEM-E/08] recognizes HLA E
Tested Reactivity	Hu
Tested Application	FACS, IP
Specificity	<p>The clone MEM-E/08 recognized native surface-expressed HLA-E, but not denaturated heavy chain of HLA-E. HLA-E belongs to the MHC Class I molecules (MHC Class Ib; nonclassical) and it is expressed on many types of the human cells.</p> <p>The published results revealed that antibody is remarkably specific for HLA-E, only with weak cross-reactivity with following classical MHC Class I molecules (MHC Class Ia): HLA-A24, -B7, -B27, -B51, -B54, -C7.</p>
Host	Mouse
Clonality	Monoclonal
Clone	MEM-E/08
Isotype	IgG1
Target Name	HLA E
Immunogen	Bacterially expressed recombinant HLA-E refolded with beta2-microglobulin and peptide.
Conjugation	Un-conjugated
Alternate Names	MHC class I antigen E; QA1; EA2.1; HLA-6.2; EA1.2; MHC; HLA class I histocompatibility antigen, alpha chain E

### Application Instructions

Application table	Application	Dilution
	FACS	4 µg/ml
	IP	Assay-dependent
Application Note	* The dilutions indicate recommended starting dilutions and the optimal dilutions or concentrations should be determined by the scientist.	
Positive Control	FACS: LCL 721.221 (HLA-E transfected)	

### Properties

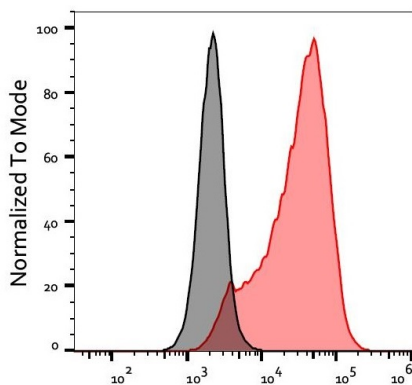
Form	Liquid
Purification	Purified from hybridoma culture supernatant by protein A-affinity chromatography.
Purity	> 95% (by SDS-PAGE)
Buffer	PBS (pH 7.4) and 15 mM Sodium azide
Preservative	15 mM Sodium azide

Concentration	1 mg/ml
Storage instruction	For continuous use, store undiluted antibody at 2-8°C for up to a week. For long-term storage, aliquot and store at -20°C or below. Storage in frost free freezers is not recommended. Avoid repeated freeze/thaw cycles. Suggest spin the vial prior to opening. The antibody solution should be gently mixed before use.
Note	For laboratory research only, not for drug, diagnostic or other use.

## Bioinformation

Database links	<a href="#">GeneID: 3133 Human</a> <a href="#">Swiss-port # P13747 Human</a>
Gene Symbol	HLA-E
Gene Full Name	major histocompatibility complex, class I, E
Background	HLA-E belongs to the HLA class I heavy chain paralogues. This class I molecule is a heterodimer consisting of a heavy chain and a light chain (beta-2 microglobulin). The heavy chain is anchored in the membrane. HLA-E binds a restricted subset of peptides derived from the leader peptides of other class I molecules. The heavy chain is approximately 45 kDa and its gene contains 8 exons. Exon one encodes the leader peptide, exons 2 and 3 encode the alpha1 and alpha2 domains, which both bind the peptide, exon 4 encodes the alpha3 domain, exon 5 encodes the transmembrane region, and exons 6 and 7 encode the cytoplasmic tail. [provided by RefSeq, Jul 2008]
Function	Preferably binds to a peptide derived from the signal sequence of most HLA-A, -B, -C and -G molecules. [UniProt]
Research Area	Immune System antibody
Calculated Mw	40 kDa

## Images



ARG63020 anti-HLA E antibody [MEM-E/08] FACS image

Flow Cytometry: Separation of unstained (black) and stained (red) HLA-E transfected cells. Cells were stained with ARG63020 anti-HLA E antibody [MEM-E/08] at 0.33 µg/ml dilution, followed by APC-conjugated Goat anti-Mouse antibody.