

ARG63013 anti-HLA DP + DR antibody [MEM-136]

Package: 100 µg
Store at: -20°C

Summary

Product Description	Mouse Monoclonal antibody [MEM-136] recognizes HLA DP + DR
Tested Reactivity	Hu
Tested Application	FACS, IHC-P, IP, WB
Specificity	The clone MEM-136 recognizes common epitope on beta-chain of human HLA-DR and HLA-DP. It reacts with alpha/beta dimer as well as with dissociated beta-subunit. DR and DP are the isotypes of human MHC Class II molecules expressed on antigen-presenting cells (APC; dendritic cells, B lymphocytes, monocytes, macrophages).
Host	Mouse
Clonality	Monoclonal
Clone	MEM-136
Isotype	IgG1
Target Name	HLA DP + DR
Immunogen	PHA-activated peripheral blood lymphocytes.
Conjugation	Un-conjugated
Alternate Names	MHC class II antigen DPB1; HLA-DP1B; HLA-DP; HLA class II histocompatibility antigen, DP; W4; DPB1; HLA class II histocompatibility antigen, DP beta 1 chain; HLA-DPB

Application Instructions

Application table	Application	Dilution
	FACS	1 - 4 µg/ml
	IHC-P	Assay-dependent
	IP	Assay-dependent
	WB	Assay-dependent
Application Note	WB: Non-reducing conditions. * The dilutions indicate recommended starting dilutions and the optimal dilutions or concentrations should be determined by the scientist.	

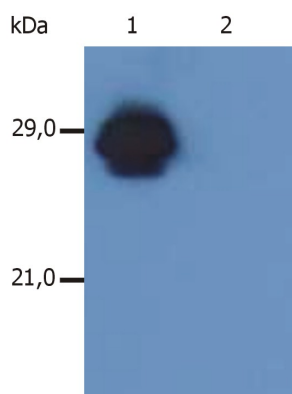
Properties

Form	Liquid
Purification	Purified from ascites by protein-A affinity chromatography.
Purity	> 95% (by SDS-PAGE)
Buffer	PBS (pH 7.4) and 15 mM Sodium azide
Preservative	15 mM Sodium azide

Concentration	1 mg/ml
Storage instruction	For continuous use, store undiluted antibody at 2-8°C for up to a week. For long-term storage, aliquot and store at -20°C or below. Storage in frost free freezers is not recommended. Avoid repeated freeze/thaw cycles. Suggest spin the vial prior to opening. The antibody solution should be gently mixed before use.
Note	For laboratory research only, not for drug, diagnostic or other use.

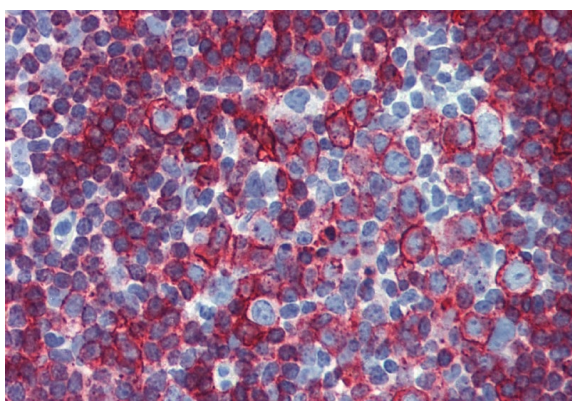
Bioinformation

Database links	GeneID: 3115 Human Swiss-port # P04440 Human
Gene Symbol	HLA-DPB1
Gene Full Name	major histocompatibility complex, class II, DP beta 1
Background	<p>HLA-DPB belongs to the HLA class II beta chain paralogues. This class II molecule is a heterodimer consisting of an alpha (DPA) and a beta chain (DPB), both anchored in the membrane. It plays a central role in the immune system by presenting peptides derived from extracellular proteins. Class II molecules are expressed in antigen presenting cells (APC: B lymphocytes, dendritic cells, macrophages). The beta chain is approximately 26-28 kDa and its gene contains 6 exons. Exon one encodes the leader peptide, exons 2 and 3 encode the two extracellular domains, exon 4 encodes the transmembrane domain and exon 5 encodes the cytoplasmic tail. Within the DP molecule both the alpha chain and the beta chain contain the polymorphisms specifying the peptide binding specificities, resulting in up to 4 different molecules. [provided by RefSeq, Jul 2008]</p>
Function	<p>Binds peptides derived from antigens that access the endocytic route of antigen presenting cells (APC) and presents them on the cell surface for recognition by the CD4 T-cells. The peptide binding cleft accommodates peptides of 10-30 residues. The peptides presented by MHC class II molecules are generated mostly by degradation of proteins that access the endocytic route, where they are processed by lysosomal proteases and other hydrolases. Exogenous antigens that have been endocytosed by the APC are thus readily available for presentation via MHC II molecules, and for this reason this antigen presentation pathway is usually referred to as exogenous. As membrane proteins on their way to degradation in lysosomes as part of their normal turn-over are also contained in the endosomal/lysosomal compartments, exogenous antigens must compete with those derived from endogenous components. Autophagy is also a source of endogenous peptides, autophagosomes constitutively fuse with MHC class II loading compartments. In addition to APCs, other cells of the gastrointestinal tract, such as epithelial cells, express MHC class II molecules and CD74 and act as APCs, which is an unusual trait of the GI tract. To produce a MHC class II molecule that presents an antigen, three MHC class II molecules (heterodimers of an alpha and a beta chain) associate with a CD74 trimer in the ER to form a heterononamer. Soon after the entry of this complex into the endosomal/lysosomal system where antigen processing occurs, CD74 undergoes a sequential degradation by various proteases, including CTSS and CTSL, leaving a small fragment termed CLIP (class-II-associated invariant chain peptide). The removal of CLIP is facilitated by HLA-DM via direct binding to the alpha-beta-CLIP complex so that CLIP is released. HLA-DM stabilizes MHC class II molecules until primary high affinity antigenic peptides are bound. The MHC II molecule bound to a peptide is then transported to the cell membrane surface. In B-cells, the interaction between HLA-DM and MHC class II molecules is regulated by HLA-DO. Primary dendritic cells (DCs) also to express HLA-DO. Lysosomal microenvironment has been implicated in the regulation of antigen loading into MHC II molecules, increased acidification produces increased proteolysis and efficient peptide loading. [UniProt]</p>
Research Area	Immune System antibody
Calculated Mw	29 kDa



ARG63013 anti-HLA DP + DR antibody [MEM-136] WB image

Western blot: Lane 1, Raji cell lysate stained with ARG63013 anti-HLA DP + DR antibody [MEM-136]. The antibody MEM-136 recognizes β -chain of HLA-DR antigen under non-reducing conditions. Lane 2 was stained with Isotype Mouse IgG1 control antibody.



ARG63013 anti-HLA DP + DR antibody [MEM-136] IHC-P image

Immunohistochemistry: Paraffin-embedded Human small intestine tissue stained with ARG63013 anti-HLA DP + DR antibody [MEM-136].
