

ARG63003 anti-HLA Class I antibody [MEM-147]

Package: 100 µg
Store at: -20°C

Summary

Product Description	Mouse Monoclonal antibody [MEM-147] recognizes HLA Class I
Tested Reactivity	Hu
Tested Application	FACS, IP, WB
Specificity	<p>The clone MEM-147 reacts with all human classical MHC Class I molecules in native cell-surface forms (e.g. it recognizes native HLA-A2 in cytofluorometry and immunoprecipitation but not in Western blotting). MHC Class I molecules (MHC Class Ia) are expressed on the surface of all human nucleated cell types.</p> <p>MEM-147 is positive in Western blotting (non-reducing conditions) only with most HLA-B and HLA-C molecules, but not HLA-A. Reactivity is very similar to the classical antibody W6/32.</p>
Host	Mouse
Clonality	Monoclonal
Clone	MEM-147
Isotype	IgG1
Target Name	HLA Class I
Immunogen	PHA-activated peripheral blood lymphocytes
Conjugation	Un-conjugated
Alternate Names	MHC class I antigen A*1; HLAA; HLA class I histocompatibility antigen, A-1 alpha chain

Application Instructions

Application table	Application	Dilution
	FACS	1 µg/ml
	IP	Assay-dependent
	WB	Assay-dependent
Application Note	WB: Under non-reducing condition. * The dilutions indicate recommended starting dilutions and the optimal dilutions or concentrations should be determined by the scientist.	

Properties

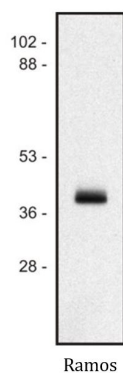
Form	Liquid
Purification	Purified from ascites by protein-A affinity chromatography.
Purity	> 95% (by SDS-PAGE)
Buffer	PBS (pH 7.4) and 15 mM Sodium azide
Preservative	15 mM Sodium azide

Concentration	1 mg/ml
Storage instruction	For continuous use, store undiluted antibody at 2-8°C for up to a week. For long-term storage, aliquot and store at -20°C or below. Storage in frost free freezers is not recommended. Avoid repeated freeze/thaw cycles. Suggest spin the vial prior to opening. The antibody solution should be gently mixed before use.
Note	For laboratory research only, not for drug, diagnostic or other use.

Bioinformation

Database links	GeneID: 3105 Human Swiss-port # P30443 Human
Gene Symbol	HLA-A
Gene Full Name	major histocompatibility complex, class I, A
Background	HLA-class I major histocompatibility (MHC) antigens are intrinsic membrane glycoproteins expressed on nucleated cells and noncovalently associated with an invariant beta2 microglobulin. They carry foreign determinants important for immune recognition by cytotoxic T cells, thus important for anti-viral and anti-tumour defence. Human HLA-class I antigens are represented by HLA-A, HLA-B and HLA-C molecules.
Function	Involved in the presentation of foreign antigens to the immune system. [UniProt]
Research Area	Immune System antibody
Calculated Mw	40 kDa
PTM	Polyubiquitinated in a post ER compartment by interaction with human herpesvirus 8 MIR1 protein. This targets the protein for rapid degradation via the ubiquitin system (By similarity).

Images



ARG63003 anti-HLA Class I antibody [MEM-147] WB image

Western blot: Ramos cell lysate (1% lauryl maltoside) (non-reduced sample) stained with ARG63003 anti-HLA Class I antibody [MEM-147].