

## ARG62738 anti-CD158d / KIR2DL4 antibody [mAb#33]

Package: 100 µg  
Store at: -20°C

### Summary

Product Description	Mouse Monoclonal antibody [mAb#33] recognizes CD158d / KIR2DL4
Tested Reactivity	Hu
Tested Application	FACS, FuncSt, ICC/IF, IP, WB
Specificity	The clone mAb 33 (also known as mAb 33 or 33) recognizes extracellular portion of CD158d / KIR2DL4, a 45 kDa NK cell marker. Cell surface expression and function of CD158d / KIR2DL4 depends on genotype of particular individuals.
Host	Mouse
Clonality	Monoclonal
Clone	mAb#33
Isotype	IgG1
Target Name	CD158d / KIR2DL4
Immunogen	NK3.3 cells and KIR2DL4-Ig fusion protein
Conjugation	Un-conjugated
Alternate Names	KIR103; CD158 antigen-like family member D; Killer cell immunoglobulin-like receptor 2DL4; CD158D; CD antigen CD158d; G9P; Killer cell inhibitory receptor 103AS; KIR-103AS; KIR103AS; MHC class I NK cell receptor KIR103AS

### Application Instructions

Application table	Application	Dilution
	FACS	2 - 6 µg/ml
	FuncSt	Assay-dependent
	ICC/IF	Assay-dependent
	IP	Assay-dependent
	WB	Assay-dependent
Application Note	Functional studies: Cytokine secretion studies. * The dilutions indicate recommended starting dilutions and the optimal dilutions or concentrations should be determined by the scientist.	

### Properties

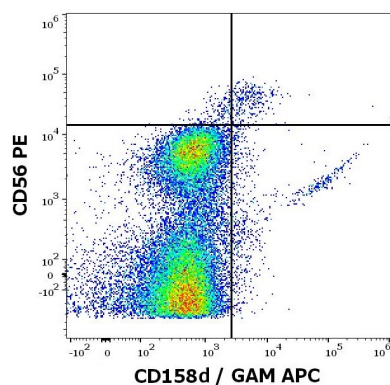
Form	Liquid
Purification	Purified from cell culture supernatant by protein-A affinity chromatography.
Purity	> 95% (by SDS-PAGE)
Buffer	PBS (pH 7.4) and 15 mM Sodium azide

Preservative	15 mM Sodium azide
Concentration	1 mg/ml
Storage instruction	For continuous use, store undiluted antibody at 2-8°C for up to a week. For long-term storage, aliquot and store at -20°C or below. Storage in frost free freezers is not recommended. Avoid repeated freeze/thaw cycles. Suggest spin the vial prior to opening. The antibody solution should be gently mixed before use.
Note	For laboratory research only, not for drug, diagnostic or other use.

## Bioinformation

Database links	<a href="#">GeneID: 3805 Human</a> <a href="#">Swiss-port # Q99706 Human</a>
Gene Symbol	KIR2DL4
Gene Full Name	killer cell immunoglobulin-like receptor, two domains, long cytoplasmic tail, 4
Background	CD158d / KIR2DL4 is a KIR family member that shares structural features with both activating and inhibitory receptors and may mediate different functions under different circumstances. It contains cytoplasmic ITIM, suggesting inhibitory function, but also transmembrane domain similar to those of activating KIRs. It has been reported that CD158d serves as an inhibitory receptor for peripheral and uterine NK cells, but its ligation with soluble mAbs (unlike immobilized mAbs) results in activation of IFN- $\gamma$ secretion. CD158d also binds both membrane form and soluble form of its ligand HLA-G.
Function	Receptor on natural killer (NK) cells for HLA-C alleles. Inhibits the activity of NK cells thus preventing cell lysis. [UniProt]
Research Area	Immune System antibody
Calculated Mw	41 kDa

## Images



ARG62738 anti-CD158d / KIR2DL4 antibody [mAb#33] FACS image

Flow Cytometry: Human lymphocytes stained with ARG62738 anti-CD158d / KIR2DL4 antibody [mAb#33] at 6  $\mu$ g/ml dilution, followed by APC-conjugated Goat anti-Mouse antibody. Cells were co-stained with anti-CD56 antibody [LT56] (PE) at 1  $\mu$ g/ml dilution.