

## ARG62712 anti-CD11a / LFA1 alpha antibody [M17 / 4]

Package: 100 µg  
Store at: -20°C

### Summary

Product Description	Rat Monoclonal antibody [M17/4] recognizes CD11a / LFA1 alpha
Tested Reactivity	Ms
Tested Application	FACS, FuncSt, IHC-Fr, IP
Specificity	The clone M17/4 reacts with CD11a (alpha-subunit of murine LFA-1), a 180 kDa type I transmembrane glycoprotein expressed on B and T lymphocytes, monocytes, macrophages, neutrophils, basophils and eosinophils.
Host	Rat
Clonality	Monoclonal
Clone	M17/4
Isotype	IgG2a
Target Name	CD11a / LFA1 alpha
Species	Mouse
Immunogen	C57BL/6 mouse splenic secondary cytotoxic T lymphocytes
Conjugation	Un-conjugated
Alternate Names	Leukocyte adhesion glycoprotein LFA-1 alpha chain; LFA1A; LFA-1A; Integrin alpha-L; CD11A; Leukocyte function-associated molecule 1 alpha chain; LFA-1; CD11 antigen-like family member A; CD antigen CD11a

### Application Instructions

Application table	Application	Dilution
	FACS	1 µg/ml
	FuncSt	Assay-dependent
	IHC-Fr	Assay-dependent
	IP	Assay-dependent
Application Note	IHC-Fr: Acetone fixation. Functional studies: Blocking. * The dilutions indicate recommended starting dilutions and the optimal dilutions or concentrations should be determined by the scientist.	
Positive Control	IHC-Fr: Mouse spleen or thymus	

### Properties

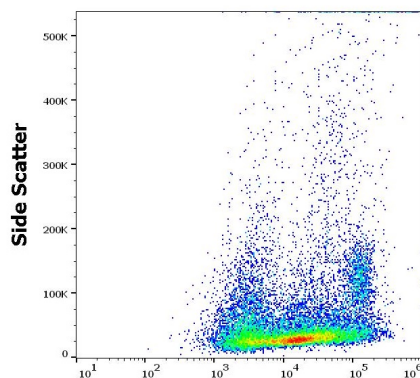
Form	Liquid
Purification	Purified by protein A

Purity	> 95% (by SDS-PAGE)
Buffer	PBS (pH 7.4) and 15 mM Sodium azide
Preservative	15 mM Sodium azide
Concentration	1 mg/ml
Storage instruction	For continuous use, store undiluted antibody at 2-8°C for up to a week. For long-term storage, aliquot and store at -20°C or below. Storage in frost free freezers is not recommended. Avoid repeated freeze/thaw cycles. Suggest spin the vial prior to opening. The antibody solution should be gently mixed before use.
Note	For laboratory research only, not for drug, diagnostic or other use.

## Bioinformation

Database links	<a href="#">GeneID: 16408 Mouse</a>
Background	CD11a (LFA-1 alpha) together with CD18 constitute leukocyte function-associated antigen 1 (LFA-1), the alphaLbeta2 integrin. CD11a is implicated in activation of LFA-1 complex. LFA-1 is expressed on the plasma membrane of leukocytes in a low-affinity conformation. Cell stimulation by chemokines or other signals leads to induction the high-affinity conformation, which supports tight binding of LFA-1 to its ligands, the intercellular adhesion molecules ICAM-1, -2, -3. LFA-1 is thus involved in interaction of various immune cells and in their tissue-specific settlement, but participates also in control of cell differentiation and proliferation and of T-cell effector functions.
Research Area	Developmental Biology antibody; Immune System antibody; Signaling Transduction antibody
Calculated Mw	129 kDa
PTM	In resting T-cells, up to 40% of surface ITGAL is constitutively phosphorylated. Phosphorylation causes conformational changes needed for ligand binding and is necessary for activation by some physiological agents.

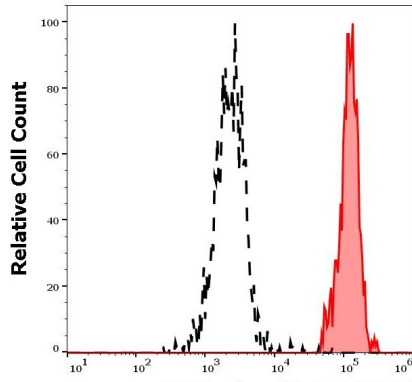
## Images



ARG62712 anti-CD11a / LFA1 alpha antibody [M17 / 4] FACS image

Flow Cytometry: Murine splenocytes stained with ARG62712 anti-CD11a / LFA1 alpha antibody [M17 / 4] at 0.6 µg/ml dilution, followed by APC-conjugated Donkey anti-Rat antibody.

ARG62712 anti-CD11a / LFA1 alpha antibody [M17 / 4] FACS image



Flow Cytometry: Separation of murine myeloid cells (red-filled) from cellular debris (black-dashed). Murine splenocytes stained with ARG62712 anti-CD11a / LFA1 alpha antibody [M17 / 4] at 0.6 µg/ml dilution, followed by APC-conjugated Donkey anti-Rat antibody.