

ARG62711
anti-CD11a / LFA1 alpha antibody [M17 / 4] (Functional Grade)Package: 100 µg
Store at: -20°C

Summary

Product Description	Functional grade and low endotoxin Rat Monoclonal antibody [M17/4] recognizes CD11a / LFA1 alpha
Tested Reactivity	Ms
Tested Application	FACS, FuncSt, IHC-Fr, IP
Specificity	The clone M17/4 reacts with CD11a (alpha-subunit of murine LFA-1), a 180 kDa type I transmembrane glycoprotein expressed on B and T lymphocytes, monocytes, macrophages, neutrophils, basophils and eosinophils.
Host	Rat
Clonality	Monoclonal
Clone	M17/4
Isotype	IgG2a
Target Name	CD11a / LFA1 alpha
Species	Mouse
Immunogen	C57BL/6 mouse splenic secondary cytotoxic T lymphocytes
Conjugation	Un-conjugated
Alternate Names	Leukocyte adhesion glycoprotein LFA-1 alpha chain; LFA1A; LFA-1A; Integrin alpha-L; CD11A; Leukocyte function-associated molecule 1 alpha chain; LFA-1; CD11 antigen-like family member A; CD antigen CD11a

Application Instructions

Application table	Application	Dilution
	FACS	1 µg/ml
	FuncSt	Assay-dependent
	IHC-Fr	Assay-dependent
	IP	Assay-dependent
Application Note	IHC-Fr: Acetone fixation. Functional studies: Blocking. * The dilutions indicate recommended starting dilutions and the optimal dilutions or concentrations should be determined by the scientist.	
Positive Control	IHC-Fr: Mouse spleen or thymus	

Properties

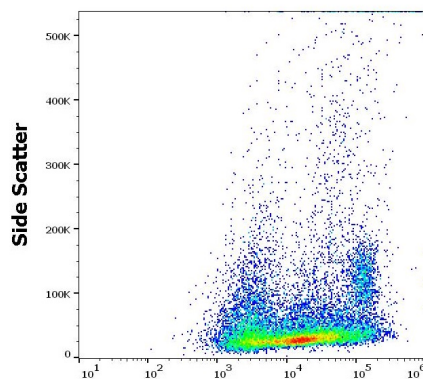
Form	Liquid
Purification	Purification with Protein G.

Purification Note	0.2 µm filter sterilized. Endotoxin level is less than 0.01 EU/µg of the protein, as determined by the LAL test.
Purity	> 95% (by SDS-PAGE)
Buffer	PBS (pH 7.4)
Concentration	1 mg/ml
Storage instruction	For continuous use, store undiluted antibody at 2-8°C for up to a week. For long-term storage, aliquot and store at -20°C or below. Storage in frost free freezers is not recommended. Avoid repeated freeze/thaw cycles. Suggest spin the vial prior to opening. The antibody solution should be gently mixed before use.
Note	For laboratory research only, not for drug, diagnostic or other use.

Bioinformation

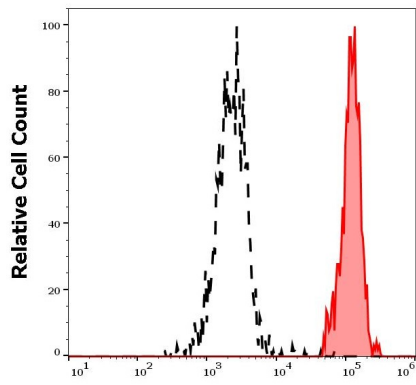
Database links	GeneID: 16408 Mouse
Background	CD11a (LFA-1 alpha) together with CD18 constitute leukocyte function-associated antigen 1 (LFA-1), the alphaLbeta2 integrin. CD11a is implicated in activation of LFA-1 complex. LFA-1 is expressed on the plasma membrane of leukocytes in a low-affinity conformation. Cell stimulation by chemokines or other signals leads to induction the high-affinity conformation, which supports tight binding of LFA-1 to its ligands, the intercellular adhesion molecules ICAM-1, -2, -3. LFA-1 is thus involved in interaction of various immune cells and in their tissue-specific settlement, but participates also in control of cell differentiation and proliferation and of T-cell effector functions.
Research Area	Developmental Biology antibody; Immune System antibody; Signaling Transduction antibody
Calculated Mw	129 kDa
PTM	In resting T-cells, up to 40% of surface ITGAL is constitutively phosphorylated. Phosphorylation causes conformational changes needed for ligand binding and is necessary for activation by some physiological agents.

Images



ARG62711 anti-CD11a / LFA1 alpha antibody [M17 / 4] (Functional Grade) FACS image

Flow Cytometry: Murine splenocytes stained with ARG62711 anti-CD11a / LFA1 alpha antibody [M17 / 4] (Functional Grade) at 0.6 µg/ml dilution, followed by APC-conjugated Donkey anti-Rat antibody.



ARG62711 anti-CD11a / LFA1 alpha antibody [M17 / 4] (Functional Grade) FACS image

Flow Cytometry: Separation of murine myeloid cells (red-filled) from cellular debris (black-dashed). Murine splenocytes stained with ARG62711 anti-CD11a / LFA1 alpha antibody [M17 / 4] (Functional Grade) at 0.6 µg/ml dilution, followed by APC-conjugated Donkey anti-Rat antibody.