

## ARG62705 anti-CD11a / LFA1 alpha antibody [MEM-83] (low endotoxin)

Package: 100 µg  
Store at: -20°C

### Summary

Product Description	Azide free and low endotoxin Mouse Monoclonal antibody [MEM-83] recognizes CD11a / LFA1 alpha
Tested Reactivity	Hu
Tested Application	FACS, FuncSt, IP
Specificity	The antibody MEM-83 reacts with an extracellular epitope of CD11a (alpha subunit of human LFA-1), a 170-180 kDa type I transmembrane glycoprotein expressed on B and T lymphocytes, monocytes, macrophages, neutrophils, basophils and eosinophils.
Host	Mouse
Clonality	Monoclonal
Clone	MEM-83
Isotype	IgG1
Target Name	CD11a / LFA1 alpha
Species	Human
Immunogen	Human peripheral blood lymphocytes.
Conjugation	Un-conjugated
Alternate Names	Leukocyte adhesion glycoprotein LFA-1 alpha chain; LFA1A; LFA-1A; Integrin alpha-L; CD11A; Leukocyte function-associated molecule 1 alpha chain; LFA-1; CD11 antigen-like family member A; CD antigen CD11a

### Application Instructions

Application table	Application	Dilution
	FACS	1 µg/ml
	FuncSt	Assay-dependent
	IP	Assay-dependent
Application Note	* The dilutions indicate recommended starting dilutions and the optimal dilutions or concentrations should be determined by the scientist.	

### Properties

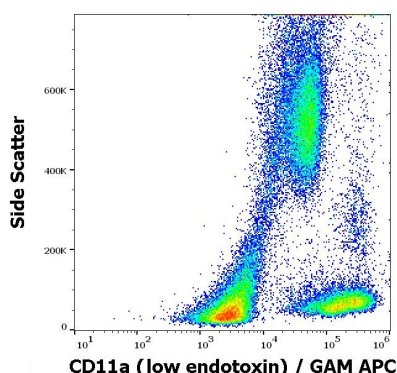
Form	Liquid
Purification	Purification with Protein A.
Purification Note	0.2 µm filter sterilized. Endotoxin level is less than 0.01 EU/µg of the protein.
Buffer	PBS
Concentration	1 mg/ml

Storage instruction	For continuous use, store undiluted antibody at 2-8°C for up to a week. For long-term storage, aliquot and store at -20°C or below. Storage in frost free freezers is not recommended. Avoid repeated freeze/thaw cycles. Suggest spin the vial prior to opening. The antibody solution should be gently mixed before use.
Note	For laboratory research only, not for drug, diagnostic or other use.

## Bioinformation

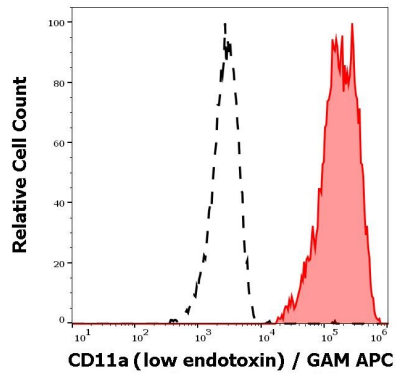
Gene Symbol	ITGAL
Gene Full Name	integrin, alpha L (antigen CD11A (p180), lymphocyte function-associated antigen 1; alpha polypeptide)
Background	ITGAL encodes the integrin alpha L chain. Integrins are heterodimeric integral membrane proteins composed of an alpha chain and a beta chain. This I-domain containing alpha integrin combines with the beta 2 chain (ITGB2) to form the integrin lymphocyte function-associated antigen-1 (LFA-1), which is expressed on all leukocytes. LFA-1 plays a central role in leukocyte intercellular adhesion through interactions with its ligands, ICAMs 1-3 (intercellular adhesion molecules 1 through 3), and also functions in lymphocyte costimulatory signaling. Two transcript variants encoding different isoforms have been found for this gene. [provided by RefSeq, Jul 2008]
Function	Integrin ITGAL/ITGB2 is a receptor for ICAM1, ICAM2, ICAM3 and ICAM4. Integrin ITGAL/ITGB2 is a receptor for F11R (PubMed:11812992, PubMed:15528364). Integrin ITGAL/ITGB2 is a receptor for the secreted form of ubiquitin-like protein ISG15; the interaction is mediated by ITGAL (PubMed:29100055). Involved in a variety of immune phenomena including leukocyte-endothelial cell interaction, cytotoxic T-cell mediated killing, and antibody dependent killing by granulocytes and monocytes. Contributes to natural killer cell cytotoxicity (PubMed:15356110). Involved in leukocyte adhesion and transmigration of leukocytes including T-cells and neutrophils (PubMed:11812992). Required for generation of common lymphoid progenitor cells in bone marrow, indicating a role in lymphopoiesis (By similarity). Integrin ITGAL/ITGB2 in association with ICAM3, contributes to apoptotic neutrophil phagocytosis by macrophages (PubMed:23775590). [UniProt]
Calculated Mw	129 kDa
PTM	In resting T-cells, up to 40% of surface ITGAL is constitutively phosphorylated. Phosphorylation causes conformational changes needed for ligand binding and is necessary for activation by some physiological agents. [UniProt]
Cellular Localization	Cell membrane; Single-pass type I membrane protein. [UniProt]

## Images



ARG62705 anti-CD11a / LFA1 alpha antibody [MEM-83] (low endotoxin) FACS image

Flow Cytometry: Human peripheral blood cells stained with ARG62705 anti-CD11a / LFA1 alpha antibody [MEM-83] (low endotoxin) at 1 µg/ml dilution, followed by APC-conjugated Goat anti-Mouse antibody.



ARG62705 anti-CD11a / LFA1 alpha antibody [MEM-83] (low endotoxin) FACS image

Flow Cytometry: Separation of Human CD11a positive lymphocytes (red-filled) from CD11a negative blood debris (black-dashed). Human peripheral whole blood stained with ARG62705 anti-CD11a / LFA1 alpha antibody [MEM-83] (low endotoxin) at 1 µg/ml dilution, followed by APC-conjugated Goat anti-Mouse antibody.