

## ARG62692 anti-Blood Group Lewis a antibody [7LE]

Package: 100 µg  
Store at: -20°C

### Summary

Product Description	Mouse Monoclonal antibody [7LE] recognizes Blood Group Lewis a
Tested Reactivity	Hu
Tested Application	ELISA, IHC-P, WB
Specificity	The clone 7LE recognizes Lewis <sup>a</sup> blood group antigen, a carbohydrate determinant carried on both glycolipids and glycoproteins, expressed in colonic epithelial cells. Lewis <sup>a</sup> may be useful for detection of gastrointestinal, pancreatic and colorectal tumors.
Host	Mouse
Clonality	Monoclonal
Clone	7LE
Isotype	IgG1
Target Name	Blood Group Lewis a
Immunogen	Mucin isolated by size-exclusion chromatography from an ovarian cyst fluid (pure endocervical type according to the Fenoglio's classification).
Conjugation	Un-conjugated

### Application Instructions

Application table	Application	Dilution
	ELISA	Assay-dependent
	IHC-P	5 µg/ml
	WB	Assay-dependent
Application Note	IHC-P: Heat mediated antigen retrieval (sodium citrate); mAb incubated for 1 hour at RT; Detection DAB * The dilutions indicate recommended starting dilutions and the optimal dilutions or concentrations should be determined by the scientist.	
Positive Control	IHC-P: Colorectal adenocarcinoma	

### Properties

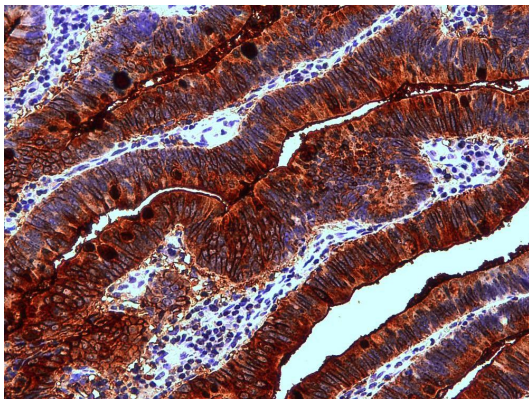
Form	Liquid
Purification	Purified from hybridoma culture supernatant by protein-A affinity chromatography.
Purity	> 95% (by SDS-PAGE)
Buffer	PBS (pH 7.4) and 15 mM Sodium azide
Preservative	15 mM Sodium azide
Concentration	1 mg/ml

Storage instruction	For continuous use, store undiluted antibody at 2-8°C for up to a week. For long-term storage, aliquot and store at -20°C or below. Storage in frost free freezers is not recommended. Avoid repeated freeze/thaw cycles. Suggest spin the vial prior to opening. The antibody solution should be gently mixed before use.
Note	For laboratory research only, not for drug, diagnostic or other use.

## Bioinformation

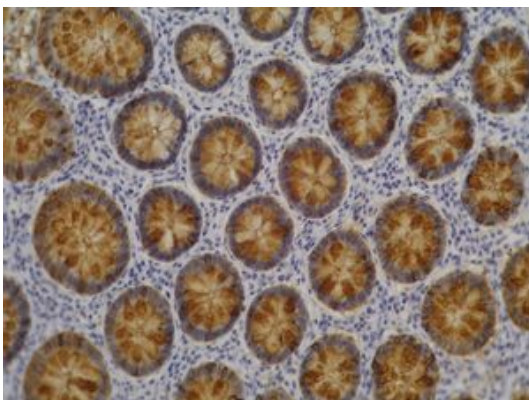
Research Area	Cell Biology and Cellular Response antibody
---------------	---

## Images



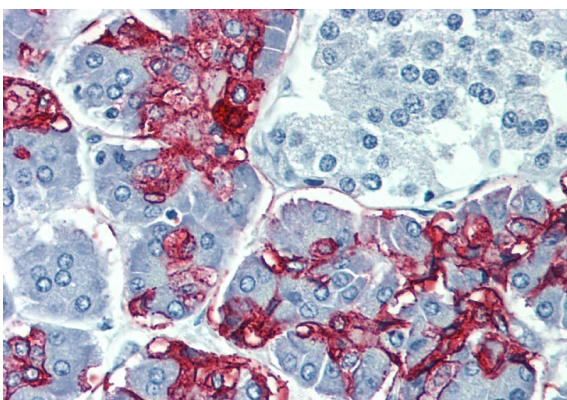
ARG62692 anti-Blood Group Lewis a antibody [7LE] IHC-P image

Immunohistochemistry: Paraffin-embedded Human colon adenocarcinoma tissue stained with ARG62692 anti-Blood Group Lewis a antibody [7LE].



ARG62692 anti-Blood Group Lewis a antibody [7LE] IHC-P image

Immunohistochemistry: Colorectal adenocarcinoma section stained with ARG62692 anti-Blood Group Lewis a antibody [7LE].



ARG62692 anti-Blood Group Lewis a antibody [7LE] IHC-P image

Immunohistochemistry: Paraffin-embedded Human pancreas tissue stained with ARG62692 anti-Blood Group Lewis a antibody [7LE].