

**ARG62337**  
anti-6X His tag antibody [HIS.H8]Package: 100 µg, 50 µg  
Store at: -20°C

### Summary

Product Description	Mouse Monoclonal antibody [HIS.H8] recognizes 6X His tag
Tested Reactivity	Other
Tested Application	Dot, ELISA, EMSA, ICC/IF, IP, WB
Specificity	Recognizes the epitope of 6x His-tags encoded by many commercially available vectors, regardless of the tag's location in the fusion protein sequences (i.e.: reacts with N-terminal, C-terminal or internal 6X His-tags)
Host	Mouse
Clonality	Monoclonal
Clone	HIS.H8
Isotype	IgG2b
Target Name	6X His tag
Species	Others
Immunogen	KLH-conjugated HHHHHH (6X His) synthetic peptide.
Conjugation	Un-conjugated

### Application Instructions

Application table	Application	Dilution
	Dot	Assay-dependent
	ELISA	Assay-dependent
	EMSA	Assay-dependent
	ICC/IF	1:500 - 1:2000
	IP	1:200
	WB	1:1000 - 1:3000
Application Note	* The dilutions indicate recommended starting dilutions and the optimal dilutions or concentrations should be determined by the scientist.	

### Properties

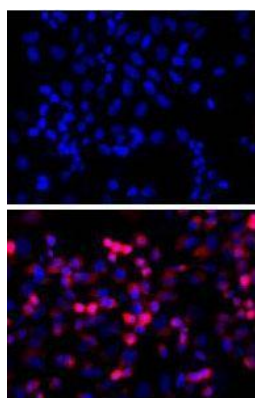
Form	Liquid
Purification	Protein A Purified
Purification Note	Protein A affinity chromatography from mouse ascites fluid.
Buffer	10mM PBS (pH 7.2) and 0.05% Sodium azide.

Preservative	0.05% Sodium azide
Concentration	1 mg/ml
Storage instruction	For continuous use, store undiluted antibody at 2-8°C for up to a week. For long-term storage, aliquot and store at -20°C or below. Storage in frost free freezers is not recommended. Avoid repeated freeze/thaw cycles. Suggest spin the vial prior to opening. The antibody solution should be gently mixed before use.
Note	For laboratory research only, not for drug, diagnostic or other use.

## Bioinformation

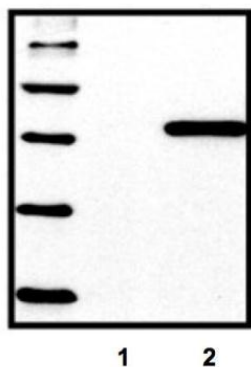
Background	<p>The H-H-H-H-H motif is used as a tag on many recombinant proteins to facilitate purification. The antibody recognizes the His-tag fused to the amino- or carboxy- termini of targeted proteins in transfected or transformed cells.</p> <p>His-tagged protein is also useful for the scientists for the binding assay and tracing the location of the protein-interested in the cells when the specific antibodies for the protein-of-interest are unavailable.</p>
Highlight	<p>Related Antibody Duos and Panels:  <a href="#">ARG30002 Tag Internal Control Antibody Duo (His tag, GAPDH)</a></p> <p>Related products:  <a href="#">6x His tag antibodies</a>; <a href="#">6x His tag ELISA Kits</a>; <a href="#">6x His tag Duos / Panels</a>; <a href="#">Anti-Mouse IgG secondary antibodies</a>;</p>
Research Area	Controls and Markers antibody; Tag Internal Control antibody

## Images



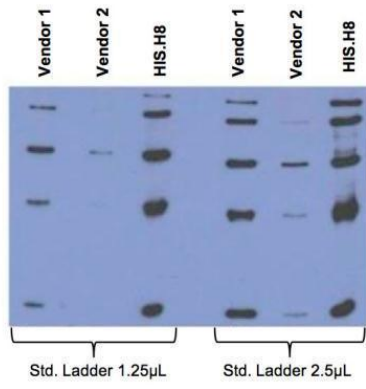
ARG62337 anti-6X His tag antibody [HIS.H8] ICC/IF image

TOP: Untransfected control; BOTTOM: ARG62337 anti-6X His tag antibody [HIS.H8] (red) on His-tagged fusion proteins in HEK293 cells. Both counterstained with DAPI (blue).



ARG62337 anti-6X His tag antibody [HIS.H8] WB image

Western blot: (1) untransfected control, (2) HEK293 cells transfected with His-tagged protein vector stained with ARG62337 anti-6X His tag antibody [HIS.H8].



### ARG62337 anti-6X His tag antibody [HIS.H8] WB image

Western blot: A standard ladder containing five different His-tagged proteins stained with ARG62337 anti-6X His tag antibody [HIS.H8] at 1:2000 (0.5 µg/ml) to compare between.