

ARG59961 anti-DTX2 / Deltex2 antibody

Package: 100 µl
Store at: -20°C

Summary

Product Description	Rabbit Polyclonal antibody recognizes DTX2 / Deltex2
Tested Reactivity	Hu, Ms, Rat
Tested Application	IHC-P, WB
Host	Rabbit
Clonality	Polyclonal
Isotype	IgG
Target Name	DTX2 / Deltex2
Species	Human
Immunogen	Recombinant fusion protein corresponding to aa. 1-280 of Human DTX2 (NP_065943.2).
Conjugation	Un-conjugated
Alternate Names	RNF58; EC 6.3.2.-; Probable E3 ubiquitin-protein ligase DTX2; RING finger protein 58; Protein deltex-2; Deltex2; hDTX2

Application Instructions

Application table	Application	Dilution
	IHC-P	1:50 - 1:200
	WB	1:500 - 1:2000
Application Note	* The dilutions indicate recommended starting dilutions and the optimal dilutions or concentrations should be determined by the scientist.	
Positive Control	Mouse testis and HepG2	
Observed Size	67 kDa	

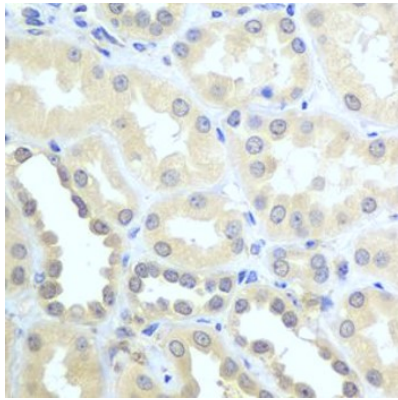
Properties

Form	Liquid
Purification	Affinity purified.
Buffer	PBS (pH 7.3), 0.02% Sodium azide and 50% Glycerol.
Preservative	0.02% Sodium azide
Stabilizer	50% Glycerol
Storage instruction	For continuous use, store undiluted antibody at 2-8°C for up to a week. For long-term storage, aliquot and store at -20°C. Storage in frost free freezers is not recommended. Avoid repeated freeze/thaw cycles. Suggest spin the vial prior to opening. The antibody solution should be gently mixed before use.
Note	For laboratory research only, not for drug, diagnostic or other use.

Bioinformation

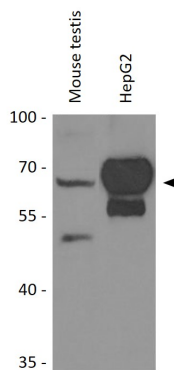
Gene Symbol	DTX2
Gene Full Name	deltex 2, E3 ubiquitin ligase
Background	DTX2 functions as an E3 ubiquitin ligase (Takeyama et al., 2003 [PubMed 12670957]).[supplied by OMIM, Nov 2009]
Function	Regulator of Notch signaling, a signaling pathway involved in cell-cell communications that regulates a broad spectrum of cell-fate determinations. Probably acts both as a positive and negative regulator of Notch, depending on the developmental and cell context. Mediates the antineural activity of Notch, possibly by inhibiting the transcriptional activation mediated by MATCH1. Functions as a ubiquitin ligase protein in vitro, suggesting that it may regulate the Notch pathway via some ubiquitin ligase activity. [UniProt]
Calculated Mw	67 kDa
Cellular Localization	Cytoplasm. Nucleus. Note=Predominantly cytoplasmic. Partially nuclear. [UniProt]

Images



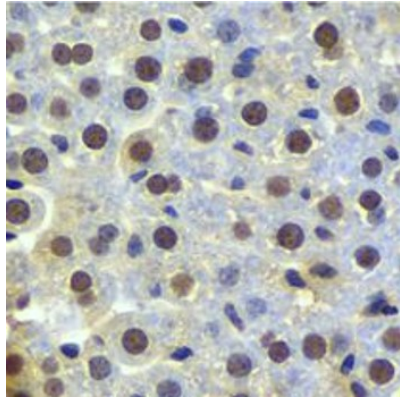
ARG59961 anti-DTX2 / Deltex2 antibody IHC-P image

Immunohistochemistry: Paraffin-embedded Human kidney stained with ARG59961 anti-DTX2 / Deltex2 antibody at 1:100 dilution.



ARG59961 anti-DTX2 / Deltex2 antibody WB image

Western blot: 25 µg of Mouse testis and HepG2 cell lysates stained with ARG59961 anti-DTX2 / Deltex2 antibody at 1:1000 dilution.



ARG59961 anti-DTX2 / Deltex2 antibody IHC-P image

Immunohistochemistry: Paraffin-embedded Mouse liver stained with ARG59961 anti-DTX2 / Deltex2 antibody at 1:100 dilution.