

ARG59951 anti-CFAP20 / GTL3 antibody

Package: 100 µl
Store at: -20°C

Summary

Product Description	Rabbit Polyclonal antibody recognizes CFAP20 / GTL3
Tested Reactivity	Hu, Ms, Rat
Tested Application	ICC/IF, WB
Host	Rabbit
Clonality	Polyclonal
Isotype	IgG
Target Name	CFAP20 / GTL3
Species	Human
Immunogen	Recombinant fusion protein corresponding to aa. 1-193 of Human CFAP20 / GTL3 (NP_037374.1).
Conjugation	Un-conjugated
Alternate Names	fSAP23; Cilia- and flagella-associated protein 20; Basal body up-regulated protein 22; C16orf80; EVORF; GTL3; Transcription factor IIB

Application Instructions

Application table	Application	Dilution
	ICC/IF	1:50 - 1:100
	WB	1:500 - 1:2000
Application Note	* The dilutions indicate recommended starting dilutions and the optimal dilutions or concentrations should be determined by the scientist.	
Positive Control	Rat lung, Mouse liver and SKOV3	
Observed Size	23 kDa	

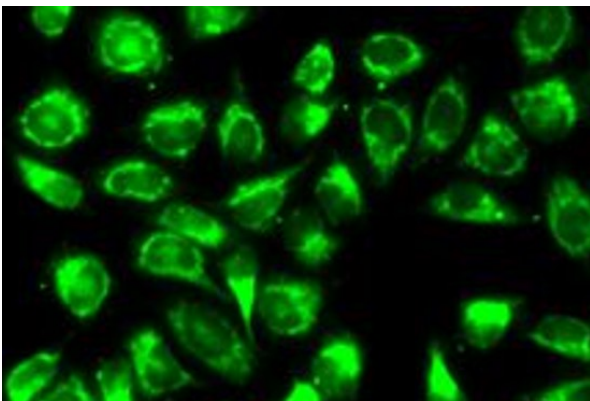
Properties

Form	Liquid
Purification	Affinity purified.
Buffer	PBS (pH 7.3), 0.02% Sodium azide and 50% Glycerol.
Preservative	0.02% Sodium azide
Stabilizer	50% Glycerol
Storage instruction	For continuous use, store undiluted antibody at 2-8°C for up to a week. For long-term storage, aliquot and store at -20°C. Storage in frost free freezers is not recommended. Avoid repeated freeze/thaw cycles. Suggest spin the vial prior to opening. The antibody solution should be gently mixed before use.
Note	For laboratory research only, not for drug, diagnostic or other use.

Bioinformation

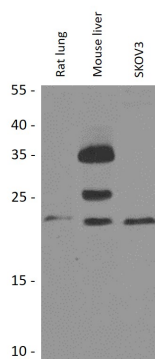
Gene Symbol	CFAP20
Gene Full Name	cilia and flagella associated protein 20
Function	Cilium- and flagellum-specific protein that plays a role in axonemal structure organization and motility. Involved in the regulation of the size and morphology of cilia. Required for axonemal microtubules polyglutamylation. [UniProt]
Calculated Mw	23 kDa
Cellular Localization	Nucleus. Cytoplasm, cytoskeleton, microtubule organizing center, centrosome, centriole. Cytoplasm, cytoskeleton, cilium basal body. Cell projection, cilium. [UniProt]

Images



ARG59951 anti-CFAP20 / GTL3 antibody ICC/IF image

Immunofluorescence: A549 cells stained with ARG59951 anti-CFAP20 / GTL3 antibody.



ARG59951 anti-CFAP20 / GTL3 antibody WB image

Western blot: 25 µg of Rat lung, Mouse liver and SKOV3 cell lysates stained with ARG59951 anti-CFAP20 / GTL3 antibody at 1:1000 dilution.