

ARG59949 anti-POLR2H / RPB8 antibody

Package: 100 µl
Store at: -20°C

Summary

Product Description	Rabbit Polyclonal antibody recognizes POLR2H / RPB8
Tested Reactivity	Hu, Ms, Rat
Tested Application	IP, WB
Host	Rabbit
Clonality	Polyclonal
Isotype	IgG
Target Name	POLR2H / RPB8
Species	Human
Immunogen	Recombinant fusion protein corresponding to aa. 1-150 of Human POLR2H (NP_006223.2).
Conjugation	Un-conjugated
Alternate Names	DNA-directed RNA polymerases I, II, and III 17.1 kDa polypeptide; DNA-directed RNA polymerases I, II, and III subunit RPABC3; hRPB8; RPB8; RPB8 homolog; RPB17; RPABC3; DNA-directed RNA polymerase II subunit H; RNA polymerases I, II, and III subunit ABC3

Application Instructions

Application table	Application	Dilution
	IP	1:50 - 1:200
	WB	1:500 - 1:2000
Application Note	* The dilutions indicate recommended starting dilutions and the optimal dilutions or concentrations should be determined by the scientist.	
Positive Control	Mouse thymus and 293T	
Observed Size	17 kDa	

Properties

Form	Liquid
Purification	Affinity purified.
Buffer	PBS (pH 7.3), 0.02% Sodium azide and 50% Glycerol.
Preservative	0.02% Sodium azide
Stabilizer	50% Glycerol
Storage instruction	For continuous use, store undiluted antibody at 2-8°C for up to a week. For long-term storage, aliquot and store at -20°C. Storage in frost free freezers is not recommended. Avoid repeated freeze/thaw cycles. Suggest spin the vial prior to opening. The antibody solution should be gently mixed before use.

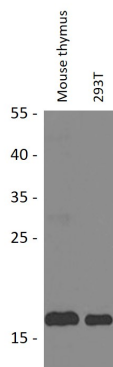
Note

For laboratory research only, not for drug, diagnostic or other use.

Bioinformation

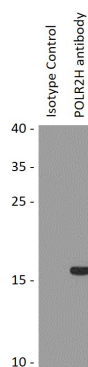
Gene Symbol	POLR2H
Gene Full Name	polymerase (RNA) II (DNA directed) polypeptide H
Background	The three eukaryotic RNA polymerases are complex multisubunit enzymes that play a central role in the transcription of nuclear genes. This gene encodes an essential and highly conserved subunit of RNA polymerase II that is shared by the other two eukaryotic DNA-directed RNA polymerases, I and III. Alternative splicing results in multiple transcript variants of this gene. [provided by RefSeq, Jul 2013]
Function	DNA-dependent RNA polymerase catalyzes the transcription of DNA into RNA using the four ribonucleoside triphosphates as substrates. Common component of RNA polymerases I, II and III which synthesize ribosomal RNA precursors, mRNA precursors and many functional non-coding RNAs, and small RNAs, such as 5S rRNA and tRNAs, respectively. [UniProt]
Calculated Mw	17 kDa
Cellular Localization	Nucleus, nucleolus. [UniProt]

Images



ARG59949 anti-POLR2H / RPB8 antibody WB image

Western blot: 25 µg of Mouse thymus and 293T cell lysates stained with ARG59949 anti-POLR2H / RPB8 antibody at 1:1000 dilution.



ARG59949 anti-POLR2H / RPB8 antibody IP image

Immunoprecipitation: 200 µg extracts of MCF7 cells immunoprecipitated and stained with ARG59949 anti-POLR2H / RPB8 antibody at 1:1000 dilution.

ARG59949 anti-POLR2H / RPB8 antibody WB image

Western blot: 25 µg of Mouse thymus and 293T cell lysates stained with ARG59949 anti-POLR2H / RPB8 antibody at 1:1000 dilution through one-step method.

