

**ARG59946**  
anti-RPL13 antibodyPackage: 100 µl  
Store at: -20°C

### Summary

Product Description	Rabbit Polyclonal antibody recognizes RPL13
Tested Reactivity	Hu, Ms, Rat
Tested Application	ICC/IF, IHC-P, WB
Host	Rabbit
Clonality	Polyclonal
Isotype	IgG
Target Name	RPL13
Species	Human
Immunogen	Recombinant fusion protein corresponding to aa. 1-211 of Human RPL13 (NP_150254.1).
Conjugation	Un-conjugated
Alternate Names	60S ribosomal protein L13; D16S44E; L13; Breast basic conserved protein 1; BBC1; D16S444E

### Application Instructions

Application table	Application	Dilution
	ICC/IF	1:50 - 1:200
	IHC-P	1:50 - 1:200
	WB	1:500 - 1:2000
Application Note	* The dilutions indicate recommended starting dilutions and the optimal dilutions or concentrations should be determined by the scientist.	
Positive Control	Mouse spleen and 293T	
Observed Size	24 kDa	

### Properties

Form	Liquid
Purification	Affinity purified.
Buffer	PBS (pH 7.3), 0.02% Sodium azide and 50% Glycerol.
Preservative	0.02% Sodium azide
Stabilizer	50% Glycerol
Storage instruction	For continuous use, store undiluted antibody at 2-8°C for up to a week. For long-term storage, aliquot and store at -20°C. Storage in frost free freezers is not recommended. Avoid repeated freeze/thaw cycles. Suggest spin the vial prior to opening. The antibody solution should be gently mixed before use.

Note For laboratory research only, not for drug, diagnostic or other use.

## Bioinformation

---

Gene Symbol RPL13

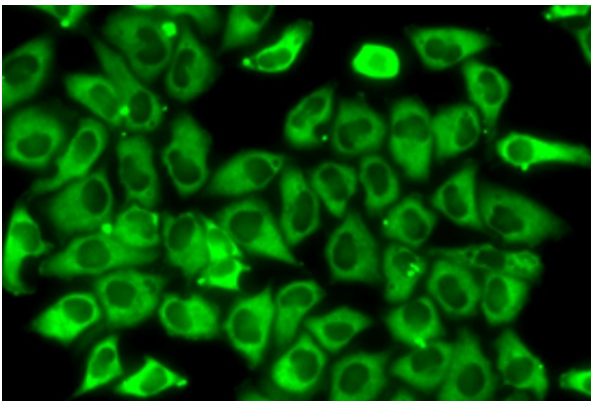
Gene Full Name ribosomal protein L13

**Background** Ribosomes, the organelles that catalyze protein synthesis, consist of a small 40S subunit and a large 60S subunit. Together these subunits are composed of 4 RNA species and approximately 80 structurally distinct proteins. This gene encodes a ribosomal protein that is a component of the 60S subunit. The protein belongs to the L13E family of ribosomal proteins. It is located in the cytoplasm. This gene is expressed at significantly higher levels in benign breast lesions than in breast carcinomas. Alternatively spliced transcript variants encoding distinct isoforms have been found for this gene. As is typical for genes encoding ribosomal proteins, there are multiple processed pseudogenes of this gene dispersed through the genome. [provided by RefSeq, Jul 2011]

Calculated Mw 24 kDa

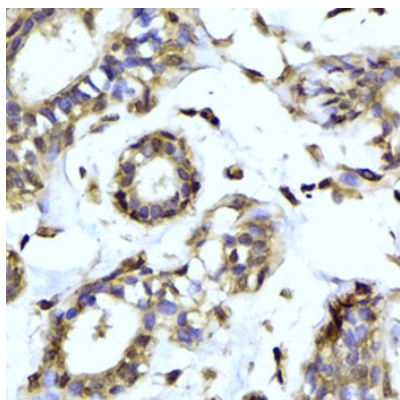
## Images

---



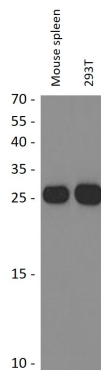
ARG59946 anti-RPL13 antibody ICC/IF image

Immunofluorescence: MCF7 cells stained with ARG59946 anti-RPL13 antibody.



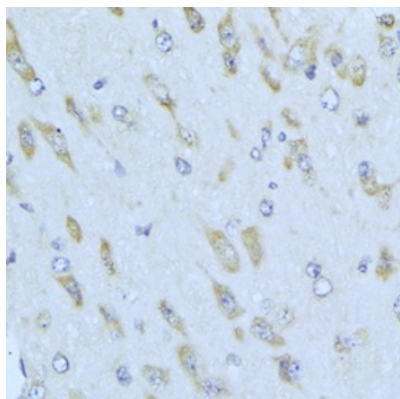
ARG59946 anti-RPL13 antibody IHC-P image

Immunohistochemistry: Paraffin-embedded Human breast stained with ARG59946 anti-RPL13 antibody at 1:100 dilution.



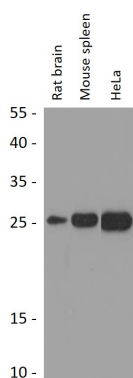
#### ARG59946 anti-RPL13 antibody WB image

Western blot: 25  $\mu$ g of Mouse spleen and 293T cell lysates stained with ARG59946 anti-RPL13 antibody at 1:1000 dilution.



#### ARG59946 anti-RPL13 antibody IHC-P image

Immunohistochemistry: Paraffin-embedded Mouse brain stained with ARG59946 anti-RPL13 antibody at 1:100 dilution.



#### ARG59946 anti-RPL13 antibody WB image

Western blot: 25  $\mu$ g of Rat brain, Mouse spleen and HeLa cell lysates stained with ARG59946 anti-RPL13 antibody at 1:1000 dilution through one-step method.