

## ARG59940 anti-CHIA / AMCase antibody

Package: 100 µl  
Store at: -20°C

### Summary

Product Description	Rabbit Polyclonal antibody recognizes CHIA / AMCase
Tested Reactivity	Hu, Ms, Rat
Tested Application	WB
Host	Rabbit
Clonality	Polyclonal
Isotype	IgG
Target Name	CHIA / AMCase
Species	Human
Immunogen	Recombinant fusion protein corresponding to aa. 1-368 of Human CHIA (NP_001244932.1).
Conjugation	Un-conjugated
Alternate Names	EC 3.2.1.14; Lung-specific protein TSA1902; CHIT2; TSA1902; AMCase; AMCASE; Acidic mammalian chitinase

### Application Instructions

Application table	Application	Dilution
	WB	1:500 - 1:2000
Application Note	* The dilutions indicate recommended starting dilutions and the optimal dilutions or concentrations should be determined by the scientist.	
Positive Control	Rat stomach and Mouse stomach	
Observed Size	50-55 kDa	

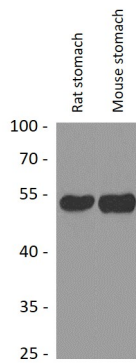
### Properties

Form	Liquid
Purification	Affinity purified.
Buffer	PBS (pH 7.3), 0.02% Sodium azide and 50% Glycerol.
Preservative	0.02% Sodium azide
Stabilizer	50% Glycerol
Storage instruction	For continuous use, store undiluted antibody at 2-8°C for up to a week. For long-term storage, aliquot and store at -20°C. Storage in frost free freezers is not recommended. Avoid repeated freeze/thaw cycles. Suggest spin the vial prior to opening. The antibody solution should be gently mixed before use.
Note	For laboratory research only, not for drug, diagnostic or other use.

## Bioinformation

Gene Symbol	CHIA
Gene Full Name	chitinase, acidic
Background	The protein encoded by this gene degrades chitin, which is found in the cell wall of most fungi as well as in arthropods and some nematodes. The encoded protein can also stimulate interleukin 13 expression, and variations in this gene can lead to asthma susceptibility. Several transcript variants encoding a few different isoforms have been found for this gene. [provided by RefSeq, Apr 2012]
Function	Degrades chitin and chitotriose. May participate in the defense against nematodes, fungi and other pathogens. Plays a role in T-helper cell type 2 (Th2) immune response. Contributes to the response to IL-13 and inflammation in response to IL-13. Stimulates chemokine production by pulmonary epithelial cells. Protects lung epithelial cells against apoptosis and promotes phosphorylation of AKT1. Its function in the inflammatory response and in protecting cells against apoptosis is inhibited by allosamidin, suggesting that the function of this protein depends on carbohydrate binding. [UniProt]
Calculated Mw	52 kDa
Cellular Localization	Isoform 1: Secreted. Note=Secretion depends on EGFR activity. Isoform 2: Cytoplasm. Isoform 3: Cytoplasm. [UniProt]

## Images



ARG59940 anti-CHIA / AMCase antibody WB image

Western blot: 25  $\mu$ g of Rat stomach and Mouse stomach lysates stained with ARG59940 anti-CHIA / AMCase antibody at 1:1000 dilution.