

ARG59928 anti-MRPL28 antibody

Package: 100 µl
Store at: -20°C

Summary

Product Description	Rabbit Polyclonal antibody recognizes MRPL28
Tested Reactivity	Hu, Rat
Tested Application	ICC/IF, IHC-P, IP, WB
Host	Rabbit
Clonality	Polyclonal
Isotype	IgG
Target Name	MRPL28
Species	Human
Immunogen	Recombinant fusion protein corresponding to aa. 1-256 of Human MRPL28 (NP_006419.2).
Conjugation	Un-conjugated
Alternate Names	Melanoma antigen p15; Melanoma-associated antigen recognized by T-lymphocytes; MAAT1; p15; L28mt; MRP-L28; 39S ribosomal protein L28, mitochondrial

Application Instructions

Application table	Application	Dilution
	ICC/IF	1:50 - 1:200
	IHC-P	1:50 - 1:200
	IP	1:50 - 1:200
	WB	1:500 - 1:2000
Application Note	* The dilutions indicate recommended starting dilutions and the optimal dilutions or concentrations should be determined by the scientist.	
Positive Control	293T	
Observed Size	~ 31 kDa	

Properties

Form	Liquid
Purification	Affinity purified.
Buffer	PBS (pH 7.3), 0.02% Sodium azide and 50% Glycerol.
Preservative	0.02% Sodium azide
Stabilizer	50% Glycerol
Storage instruction	For continuous use, store undiluted antibody at 2-8°C for up to a week. For long-term storage, aliquot and store at -20°C. Storage in frost free freezers is not recommended. Avoid repeated freeze/thaw

cycles. Suggest spin the vial prior to opening. The antibody solution should be gently mixed before use.

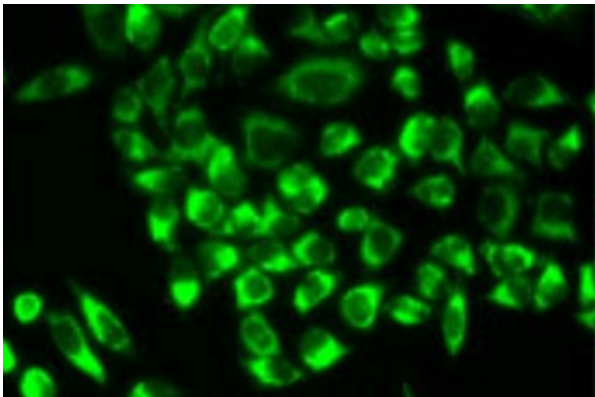
Note

For laboratory research only, not for drug, diagnostic or other use.

Bioinformation

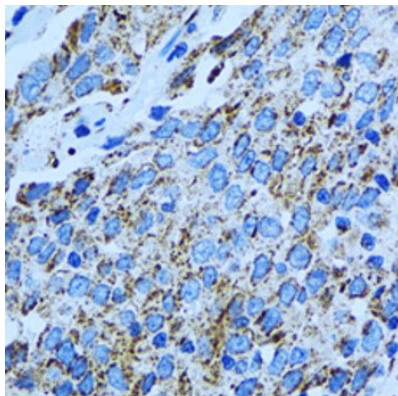
Gene Symbol	MRPL28
Gene Full Name	mitochondrial ribosomal protein L28
Background	Mammalian mitochondrial ribosomal proteins are encoded by nuclear genes and help in protein synthesis within the mitochondrion. Mitochondrial ribosomes (mitoribosomes) consist of a small 28S subunit and a large 39S subunit. They have an estimated 75% protein to rRNA composition compared to prokaryotic ribosomes, where this ratio is reversed. Another difference between mammalian mitoribosomes and prokaryotic ribosomes is that the latter contain a 5S rRNA. Among different species, the proteins comprising the mitoribosome differ greatly in sequence, and sometimes in biochemical properties, which prevents easy recognition by sequence homology. This gene encodes a 39S subunit protein, a part of which was originally isolated by its ability to recognize tyrosinase in an HLA-A24-restricted fashion. [provided by RefSeq, Jul 2008]
Calculated Mw	30 kDa
Cellular Localization	Mitochondrion. [UniProt]

Images



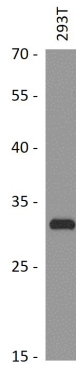
ARG59928 anti-MRPL28 antibody ICC/IF image

Immunofluorescence: U2OS cells stained with ARG59928 anti-MRPL28 antibody.



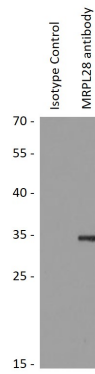
ARG59928 anti-MRPL28 antibody IHC-P image

Immunohistochemistry: Paraffin-embedded Human lung cancer stained with ARG59928 anti-MRPL28 antibody at 1:100 dilution.



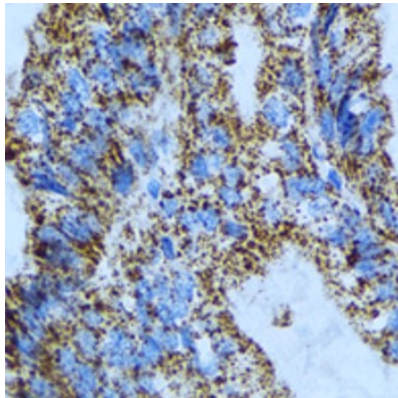
ARG59928 anti-MRPL28 antibody WB image

Western blot: 25 µg of 293T cell lysate stained with ARG59928 anti-MRPL28 antibody at 1:1000 dilution.



ARG59928 anti-MRPL28 antibody IP image

Immunoprecipitation: 200 µg extracts of 293T cells immunoprecipitated and stained with ARG59928 anti-MRPL28 antibody at 1:1000 dilution.



ARG59928 anti-MRPL28 antibody IHC-P image

Immunohistochemistry: Paraffin-embedded Human gastric cancer stained with ARG59928 anti-MRPL28 antibody at 1:100 dilution.