

ARG59925 anti-CXXC1 antibody

Package: 100 µl
Store at: -20°C

Summary

Product Description	Rabbit Polyclonal antibody recognizes CXXC1
Tested Reactivity	Hu, Ms, Rat
Tested Application	ICC/IF, WB
Host	Rabbit
Clonality	Polyclonal
Isotype	IgG
Target Name	CXXC1
Species	Human
Immunogen	Recombinant fusion protein corresponding to aa. 1-210 of Human CXXC1 (NP_001095124.1).
Conjugation	Un-conjugated
Alternate Names	5830420C16Rik; CFP1; HsT2645; PHF18; 2410002I16Rik; CGBP; ZCGPC1; SPP1; hCGBP; PCCX1; CXXC-type zinc finger protein 1; CpG-binding protein; PHD finger and CXXC domain-containing protein 1

Application Instructions

Application table	Application	Dilution
	ICC/IF	1:50 - 1:200
	WB	1:500 - 1:2000
Application Note	* The dilutions indicate recommended starting dilutions and the optimal dilutions or concentrations should be determined by the scientist.	
Positive Control	Rat testis and HepG2	
Observed Size	75 kDa	

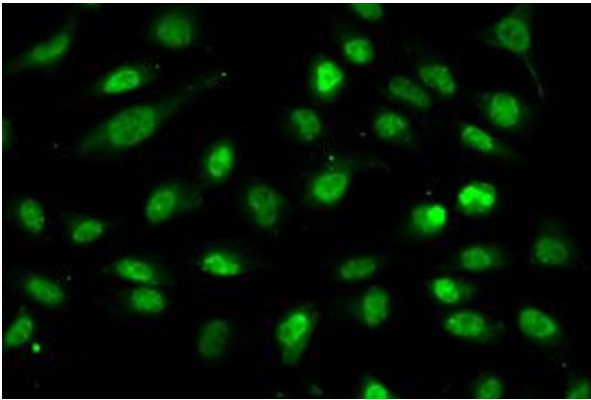
Properties

Form	Liquid
Purification	Affinity purified.
Buffer	PBS (pH 7.3), 0.02% Sodium azide and 50% Glycerol.
Preservative	0.02% Sodium azide
Stabilizer	50% Glycerol
Storage instruction	For continuous use, store undiluted antibody at 2-8°C for up to a week. For long-term storage, aliquot and store at -20°C. Storage in frost free freezers is not recommended. Avoid repeated freeze/thaw cycles. Suggest spin the vial prior to opening. The antibody solution should be gently mixed before use.
Note	For laboratory research only, not for drug, diagnostic or other use.

Bioinformation

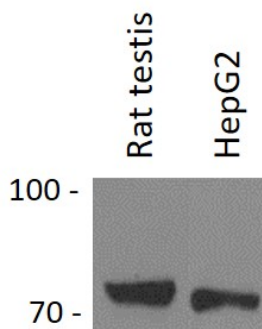
Gene Symbol	CXXC1
Gene Full Name	CXXC finger protein 1
Background	This gene encodes a protein that functions as a transcriptional activator that binds specifically to non-methylated CpG motifs through its CXXC domain. The protein is a component of the SETD1 complex, regulates gene expression and is essential for vertebrate development. [provided by RefSeq, Sep 2015]
Function	Transcriptional activator that exhibits a unique DNA binding specificity for CpG unmethylated motifs with a preference for CpGG. [UniProt]
Calculated Mw	76 kDa
PTM	May be regulated by proteolysis. [UniProt]
Cellular Localization	Nucleus speckle. Note=Associated with euchromatin. During mitosis, excluded from condensed chromosomes. [UniProt]

Images



ARG59925 anti-CXXC1 antibody ICC/IF image

Immunofluorescence: A549 cells stained with ARG59925 anti-CXXC1 antibody.



ARG59925 anti-CXXC1 antibody WB image

Western blot: 25 µg of Rat testis and HepG2 cell lysates stained with ARG59925 anti-CXXC1 antibody at 1:1000 dilution.