

ARG59920 anti-MRM3 / RNMTL1 antibody

Package: 100 µl
Store at: -20°C

Summary

Product Description	Rabbit Polyclonal antibody recognizes MRM3 / RNMTL1
Tested Reactivity	Hu
Tested Application	WB
Host	Rabbit
Clonality	Polyclonal
Isotype	IgG
Target Name	MRM3 / RNMTL1
Species	Human
Immunogen	Recombinant fusion protein corresponding to aa. 1-420 of Human MRM3 (NP_060616.1).
Conjugation	Un-conjugated
Alternate Names	MRM3; HC90; rRNA methyltransferase 3, mitochondrial; guanosine; RNA methyltransferase-like protein 1; 1370; EC 2.1.1.-; 16S rRNA [Gm1370] 2'-O-methyltransferase; 16S rRNA; RMTL1

Application Instructions

Application table	Application	Dilution
	WB	1:500 - 1:2000
Application Note	* The dilutions indicate recommended starting dilutions and the optimal dilutions or concentrations should be determined by the scientist.	
Positive Control	U87	
Observed Size	47 kDa	

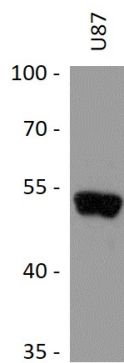
Properties

Form	Liquid
Purification	Affinity purified.
Buffer	PBS (pH 7.3), 0.02% Sodium azide and 50% Glycerol.
Preservative	0.02% Sodium azide
Stabilizer	50% Glycerol
Storage instruction	For continuous use, store undiluted antibody at 2-8°C for up to a week. For long-term storage, aliquot and store at -20°C. Storage in frost free freezers is not recommended. Avoid repeated freeze/thaw cycles. Suggest spin the vial prior to opening. The antibody solution should be gently mixed before use.
Note	For laboratory research only, not for drug, diagnostic or other use.

Bioinformation

Gene Symbol	RNMTL1
Gene Full Name	RNA methyltransferase like 1
Function	S-adenosyl-L-methionine-dependent 2'-O-ribose methyltransferase that catalyzes the formation of 2'-O-methylguanosine at position 1370 (Gm1370) in the 16S mitochondrial large subunit ribosomal RNA (mtLSU rRNA), a conserved modification in the peptidyl transferase domain of the mtLSU rRNA. [UniProt]
Calculated Mw	47 kDa
Cellular Localization	Mitochondrion. [UniProt]

Images



ARG59920 anti-MRM3 / RNMTL1 antibody WB image

Western blot: 25 µg of U87 cell lysate stained with ARG59920 anti-MRM3 / RNMTL1 antibody at 1:1000 dilution.