

ARG59915 anti-CRCP antibody

Package: 100 µl
Store at: -20°C

Summary

Product Description	Rabbit Polyclonal antibody recognizes CRCP
Tested Reactivity	Hu, Ms, Rat
Tested Application	IHC-P, WB
Host	Rabbit
Clonality	Polyclonal
Isotype	IgG
Target Name	CRCP
Species	Human
Immunogen	Recombinant fusion protein corresponding to aa. 1-115 of Human CRCP (NP_001035737.1).
Conjugation	Un-conjugated
Alternate Names	CGRPRCP; Calcitonin gene-related peptide-receptor component protein; RNA polymerase III subunit C9; RCP; RCP9; CGRP-receptor component protein; HsC17; CGRP-RCP; DNA-directed RNA polymerase III subunit RPC9

Application Instructions

Application table	Application	Dilution
	IHC-P	1:50 - 1:200
	WB	1:500 - 1:2000
Application Note	* The dilutions indicate recommended starting dilutions and the optimal dilutions or concentrations should be determined by the scientist.	
Positive Control	Mouse testis and Jurkat	
Observed Size	17 kDa	

Properties

Form	Liquid
Purification	Affinity purified.
Buffer	PBS (pH 7.3), 0.02% Sodium azide and 50% Glycerol.
Preservative	0.02% Sodium azide
Stabilizer	50% Glycerol
Storage instruction	For continuous use, store undiluted antibody at 2-8°C for up to a week. For long-term storage, aliquot and store at -20°C. Storage in frost free freezers is not recommended. Avoid repeated freeze/thaw cycles. Suggest spin the vial prior to opening. The antibody solution should be gently mixed before use.

Note

For laboratory research only, not for drug, diagnostic or other use.

Bioinformation

Gene Symbol CRCP

Gene Full Name CGRP receptor component

Background This gene encodes a membrane protein that functions as part of a receptor complex for a small neuropeptide that increases intracellular cAMP levels. Alternate transcriptional splice variants, encoding different isoforms, have been characterized. [provided by RefSeq, Jul 2008]

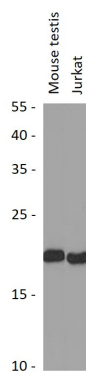
Function DNA-dependent RNA polymerase catalyzes the transcription of DNA into RNA using the four ribonucleoside triphosphates as substrates. Specific peripheric component of RNA polymerase III which synthesizes small RNAs, such as 5S rRNA and tRNAs. Plays a key role in sensing and limiting infection by intracellular bacteria and DNA viruses. Acts as nuclear and cytosolic DNA sensor involved in innate immune response. Can sense non-self dsDNA that serves as template for transcription into dsRNA. The non-self RNA polymerase III transcripts induce type I interferon and NF- Kappa-B through the RIG-I pathway (By similarity).

Accessory protein for the calcitonin gene-related peptide (CGRP) receptor. It modulates CGRP responsiveness in a variety of tissues. [UniProt]

Calculated Mw 17 kDa

Cellular Localization Nucleus. Cell membrane; Peripheral membrane protein; Cytoplasmic side. [UniProt]

Images



ARG59915 anti-CRCP antibody WB image

Western blot: 25 µg of Mouse testis and Jurkat cell lysates stained with ARG59915 anti-CRCP antibody at 1:3000 dilution.