

ARG59865 anti-SUCLG1 antibody

Package: 100 µl
Store at: -20°C

Summary

Product Description	Rabbit Polyclonal antibody recognizes SUCLG1
Tested Reactivity	Hu, Ms, Rat
Tested Application	ICC/IF, WB
Host	Rabbit
Clonality	Polyclonal
Isotype	IgG
Target Name	SUCLG1
Species	Human
Immunogen	Recombinant fusion protein corresponding to aa. 41-346 of Human SUCLG1 (NP_003840.2).
Conjugation	Un-conjugated
Alternate Names	EC 6.2.1.5; SCS-alpha; SUCLA1; MTDPS9; Succinyl-CoA ligase [ADP/GDP-forming] subunit alpha, mitochondrial; EC 6.2.1.4; Succinyl-CoA synthetase subunit alpha; GALPHA

Application Instructions

Application table	Application	Dilution
	ICC/IF	1:50 - 1:200
	WB	1:200 - 1:2000
Application Note	* The dilutions indicate recommended starting dilutions and the optimal dilutions or concentrations should be determined by the scientist.	
Positive Control	Rat liver, Mouse heart and A-549	
Observed Size	26 - 36 kDa	

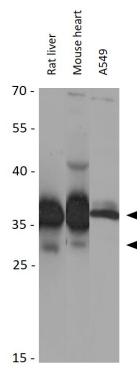
Properties

Form	Liquid
Purification	Affinity purified.
Buffer	PBS (pH 7.3), 0.02% Sodium azide and 50% Glycerol.
Preservative	0.02% Sodium azide
Stabilizer	50% Glycerol
Storage instruction	For continuous use, store undiluted antibody at 2-8°C for up to a week. For long-term storage, aliquot and store at -20°C. Storage in frost free freezers is not recommended. Avoid repeated freeze/thaw cycles. Suggest spin the vial prior to opening. The antibody solution should be gently mixed before use.
Note	For laboratory research only, not for drug, diagnostic or other use.

Bioinformation

Gene Symbol	SUCLG1
Gene Full Name	succinate-CoA ligase, alpha subunit
Background	This gene encodes the alpha subunit of the heterodimeric enzyme succinate coenzyme A ligase. This enzyme is targeted to the mitochondria and catalyzes the conversion of succinyl CoA and ADP or GDP to succinate and ATP or GTP. Mutations in this gene are the cause of the metabolic disorder fatal infantile lactic acidosis and mitochondrial DNA depletion. [provided by RefSeq, Feb 2010]
Function	Catalyzes the ATP- or GTP-dependent ligation of succinate and CoA to form succinyl-CoA. The nature of the beta subunit determines the nucleotide specificity (By similarity). [UniProt]
Calculated Mw	36 kDa
Cellular Localization	Mitochondrion. [UniProt]

Images



ARG59865 anti-SUCLG1 antibody WB image

Western blot: 25 µg of Rat liver, Mouse heart and A549 cell lysates stained with ARG59865 anti-SUCLG1 antibody at 1:1000 dilution.