

## ARG59817 anti-Pramef20 antibody

Package: 100 µl  
Store at: -20°C

### Summary

Product Description	Rabbit Polyclonal antibody recognizes Pramef20
Tested Reactivity	Hu, Ms, Rat
Tested Application	IHC-P, WB
Host	Rabbit
Clonality	Polyclonal
Isotype	IgG
Target Name	Pramef20
Species	Mouse
Immunogen	Recombinant fusion protein corresponding to aa. 67-274 of Mouse Pramef20 (NP_001108549.1).
Conjugation	Un-conjugated
Alternate Names	PRAMEF21; PRAME family member 20

### Application Instructions

Application table	Application	Dilution
	IHC-P	1:100 - 1:200
	WB	1:500 - 1:2000
Application Note	* The dilutions indicate recommended starting dilutions and the optimal dilutions or concentrations should be determined by the scientist.	
Positive Control	Rat heart and Mouse skeletal muscle	
Observed Size	50 kDa	

### Properties

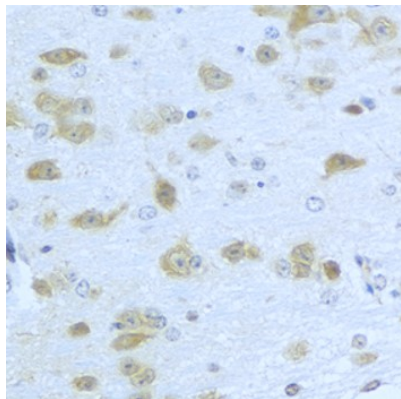
Form	Liquid
Purification	Affinity purified.
Buffer	PBS (pH 7.3), 0.02% Sodium azide and 50% Glycerol.
Preservative	0.02% Sodium azide
Stabilizer	50% Glycerol
Storage instruction	For continuous use, store undiluted antibody at 2-8°C for up to a week. For long-term storage, aliquot and store at -20°C. Storage in frost free freezers is not recommended. Avoid repeated freeze/thaw cycles. Suggest spin the vial prior to opening. The antibody solution should be gently mixed before use.
Note	For laboratory research only, not for drug, diagnostic or other use.

## Bioinformation

---

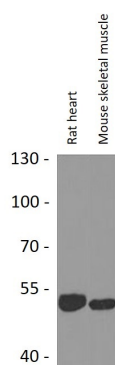
Gene Symbol	PRAMEF20
Gene Full Name	PRAME family member 20
Calculated Mw	55 kDa

## Images



ARG59817 anti-Pramef20 antibody IHC-P image

Immunohistochemistry: Paraffin-embedded Mouse brain stained with ARG59817 anti-Pramef20 antibody at 1:100 dilution.



ARG59817 anti-Pramef20 antibody WB image

Western blot: 25 µg of Rat heart and Mouse skeletal muscle lysates stained with ARG59817 anti-Pramef20 antibody at 1:1000 dilution.