

ARG59785 anti-KIF2C / MCAK antibody

Package: 100 µl
Store at: -20°C

Summary

| | |
|---------------------|---|
| Product Description | Rabbit Polyclonal antibody recognizes KIF2C / MCAK |
| Tested Reactivity | Hu, Ms, Rat |
| Tested Application | ICC/IF, IHC-P, WB |
| Host | Rabbit |
| Clonality | Polyclonal |
| Isotype | IgG |
| Target Name | KIF2C / MCAK |
| Species | Human |
| Immunogen | Recombinant fusion protein corresponding to aa. 1-190 of Human KIF2C (NP_006836.2). |
| Conjugation | Un-conjugated |
| Alternate Names | Mitotic centromere-associated kinesin; MCAK; Kinesin-like protein KIF2C; KNSL6; Kinesin-like protein 6; CT139 |

Application Instructions

| Application table | Application | Dilution |
|-------------------|--|----------------|
| | ICC/IF | 1:50 - 1:200 |
| | IHC-P | 1:50 - 1:200 |
| | WB | 1:500 - 1:2000 |
| Application Note | * The dilutions indicate recommended starting dilutions and the optimal dilutions or concentrations should be determined by the scientist. | |
| Positive Control | OVCAR-3 | |
| Observed Size | 95 kDa | |

Properties

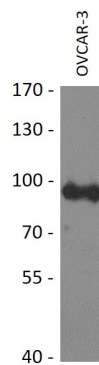
| | |
|---------------------|---|
| Form | Liquid |
| Purification | Affinity purified. |
| Buffer | PBS (pH 7.3), 0.02% Sodium azide and 50% Glycerol. |
| Preservative | 0.02% Sodium azide |
| Stabilizer | 50% Glycerol |
| Storage instruction | For continuous use, store undiluted antibody at 2-8°C for up to a week. For long-term storage, aliquot and store at -20°C. Storage in frost free freezers is not recommended. Avoid repeated freeze/thaw cycles. Suggest spin the vial prior to opening. The antibody solution should be gently mixed before use. |

Note For laboratory research only, not for drug, diagnostic or other use.

Bioinformation

| | |
|-----------------------|---|
| Gene Symbol | KIF2C |
| Gene Full Name | kinesin family member 2C |
| Background | This gene encodes a kinesin-like protein that functions as a microtubule-dependent molecular motor. The encoded protein can depolymerize microtubules at the plus end, thereby promoting mitotic chromosome segregation. Alternative splicing results in multiple transcript variants. [provided by RefSeq, Jul 2014] |
| Function | In complex with KIF18B, constitutes the major microtubule plus-end depolymerizing activity in mitotic cells. Regulates the turnover of microtubules at the kinetochore and functions in chromosome segregation during mitosis. [UniProt] |
| Calculated Mw | 81 kDa |
| PTM | Phosphorylation by AURKB, regulates association with centromeres and kinetochores and the microtubule depolymerization activity. Ubiquitinated. [UniProt] |
| Cellular Localization | Cytoplasm, cytoskeleton. Nucleus. Chromosome, centromere. Chromosome, centromere, kinetochore. Note=Associates with the microtubule network at the growing distal tip (the plus-end) of microtubules, probably through interaction with MTUS2/TIP150 and MAPRE1 (By similarity). Association with microtubule plus ends is also mediated by interaction with KIF18B. Centromeric localization requires the presence of BUB1 and SGO2. [UniProt] |

Images



ARG59785 anti-KIF2C / MCAK antibody WB image

Western blot: 25 µg of OVCAR-3 cell lysate stained with ARG59785 anti-KIF2C / MCAK antibody at 1:1000 dilution.