

**ARG59761**  
anti-RBM12B antibodyPackage: 50 µl  
Store at: -20°C

### Summary

Product Description	Rabbit Polyclonal antibody recognizes RBM12B
Tested Reactivity	Hu
Tested Application	WB
Host	Rabbit
Clonality	Polyclonal
Isotype	IgG
Target Name	RBM12B
Species	Human
Immunogen	Synthetic peptide around the middle region of Human RBM12B. (within the following region: EHFRRSREEDFRHPPDEDFRGPPDEDFRHPPDEDFRSPQEEDFRCPSDED)
Conjugation	Un-conjugated
Alternate Names	MGC:33837; RNA-binding motif protein 12B; RNA-binding protein 12B

### Application Instructions

Application table	Application	Dilution
	WB	1 µg/ml
Application Note	* The dilutions indicate recommended starting dilutions and the optimal dilutions or concentrations should be determined by the scientist.	

### Properties

Form	Liquid
Purification	Affinity purified.
Buffer	PBS, 0.09% (w/v) Sodium azide and 2% Sucrose.
Preservative	0.09% (w/v) Sodium azide
Stabilizer	2% Sucrose
Concentration	Batch dependent: 0.5 - 1 mg/ml
Storage instruction	For continuous use, store undiluted antibody at 2-8°C for up to a week. For long-term storage, aliquot and store at -20°C or below. Storage in frost free freezers is not recommended. Avoid repeated freeze/thaw cycles. Suggest spin the vial prior to opening. The antibody solution should be gently mixed before use.
Note	For laboratory research only, not for drug, diagnostic or other use.

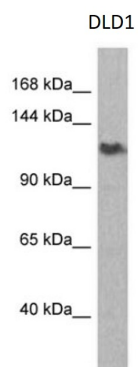
## Bioinformation

---

Gene Symbol	RBM12B
Gene Full Name	RNA binding motif protein 12B
Calculated Mw	118 kDa

## Images

---



ARG59761 anti-RBM12B antibody WB image

Western blot: Human DLD1 whole cell lysate stained with ARG59761 anti-RBM12B antibody at 1  $\mu$ g/ml dilution.