

ARG59760 anti-NSA2 antibody

Package: 50 µl
Store at: -20°C

Summary

Product Description	Rabbit Polyclonal antibody recognizes NSA2
Tested Reactivity	Hu
Predict Reactivity	Ms, Rat, Cow, Dog, Gpig, Hrs, Rb, Zfsh
Tested Application	WB
Host	Rabbit
Clonality	Polyclonal
Isotype	IgG
Target Name	NSA2
Species	Human
Immunogen	Synthetic peptide around the N-terminal region of Human NSA2. (within the following region: QNEYIELHRKRYGYRLDYHEKKRKKESREAHERSKAKKMIGLKAKLYHK)
Conjugation	Un-conjugated
Alternate Names	Ribosome biogenesis protein NSA2 homolog; HCLG1; HCL-G1; Hairy cell leukemia protein 1; HUSSY-29; HUSSY29; TGF-beta-inducible nuclear protein 1; TINP1; CDK105

Application Instructions

Predict Reactivity Note	Predicted Homology Based On Immunogen Sequence: Cow: 93%; Dog: 93%; Guinea pig: 100%; Horse: 93%; Mouse: 93%; Rabbit: 100%; Rat: 100%; Zebrafish: 86%				
Application table	<table><thead><tr><th>Application</th><th>Dilution</th></tr></thead><tbody><tr><td>WB</td><td>1 µg/ml</td></tr></tbody></table>	Application	Dilution	WB	1 µg/ml
Application	Dilution				
WB	1 µg/ml				
Application Note	* The dilutions indicate recommended starting dilutions and the optimal dilutions or concentrations should be determined by the scientist.				
Positive Control	Human fetal heart				
Observed Size	~ 30 kDa				

Properties

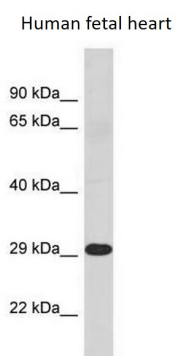
Form	Liquid
Purification	Affinity purified.
Buffer	PBS, 0.09% (w/v) Sodium azide and 2% Sucrose.
Preservative	0.09% (w/v) Sodium azide
Stabilizer	2% Sucrose
Concentration	Batch dependent: 0.5 - 1 mg/ml

Storage instruction	For continuous use, store undiluted antibody at 2-8°C for up to a week. For long-term storage, aliquot and store at -20°C or below. Storage in frost free freezers is not recommended. Avoid repeated freeze/thaw cycles. Suggest spin the vial prior to opening. The antibody solution should be gently mixed before use.
Note	For laboratory research only, not for drug, diagnostic or other use.

Bioinformation

Gene Symbol	NSA2
Gene Full Name	NSA2 ribosome biogenesis homolog
Background	This gene encodes a nucleolar protein involved in cell cycle regulation and proliferation. This gene was identified based on sequence similarity to a highly conserved <i>Saccharomyces cerevisiae</i> gene encoding a pre-ribosomal protein, which is involved in large ribosomal subunit biogenesis. The encoded protein is found at elevated levels in diabetic nephropathy. Alternative splicing results in multiple transcript variants. Several related pseudogenes have been identified. [provided by RefSeq, Nov 2012]
Function	Involved in the biogenesis of the 60S ribosomal subunit. May play a part in the quality control of pre-60S particles (By similarity). [UniProt]
Calculated Mw	30 kDa
Cellular Localization	Nucleus, nucleolus. [UniProt]

Images



ARG59760 anti-NSA2 antibody WB image

Western blot: Human fetal heart lysate stained with ARG59760 anti-NSA2 antibody at 1 µg/ml dilution.