

ARG59755 anti-CLEC12A antibody

Package: 50 µg
Store at: -20°C

Summary

Product Description	Goat Polyclonal antibody recognizes CLEC12A
Tested Reactivity	Hu
Tested Application	WB
Host	Goat
Clonality	Polyclonal
Isotype	IgG
Target Name	CLEC12A
Species	Human
Immunogen	Synthetic peptide around the C-terminus of Human CLEC12A. (NP_612210.4; NP_963917.2; NP_001193939.1. C-NPVQLGSTYFRE)
Conjugation	Un-conjugated
Alternate Names	Dendritic cell-associated lectin 2; C-type lectin domain family 12 member A; Myeloid inhibitory C-type lectin-like receptor; DCAL-2; C-type lectin-like molecule 1; M1CL; CD371; CLL-1; CLL1

Application Instructions

Application table	Application	Dilution
	WB	0.3 - 1 µg/ml
Application Note	WB: Recommend incubate at RT for 1h. * The dilutions indicate recommended starting dilutions and the optimal dilutions or concentrations should be determined by the scientist.	
Observed Size	~ 37 kDa	

Properties

Form	Liquid
Purification	Ammonium sulphate precipitation followed by affinity purification with immunogen.
Buffer	Tris saline (pH 7.3), 0.02% Sodium azide and 0.5% BSA.
Preservative	0.02% Sodium azide
Stabilizer	0.5% BSA
Concentration	0.5 mg/ml
Storage instruction	For continuous use, store undiluted antibody at 2-8°C for up to a week. For long-term storage, aliquot and store at -20°C or below. Storage in frost free freezers is not recommended. Avoid repeated freeze/thaw cycles. Suggest spin the vial prior to opening. The antibody solution should be gently mixed before use.

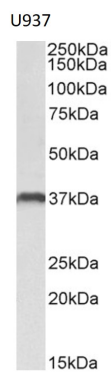
Note

For laboratory research only, not for drug, diagnostic or other use.

Bioinformation

Gene Symbol	CLEC12A
Gene Full Name	C-type lectin domain family 12, member A
Background	This gene encodes a member of the C-type lectin/C-type lectin-like domain (CTL/CTLD) superfamily. Members of this family share a common protein fold and have diverse functions, such as cell adhesion, cell-cell signaling, glycoprotein turnover, and roles in inflammation and immune response. The protein encoded by this gene is a negative regulator of granulocyte and monocyte function. Several alternatively spliced transcript variants of this gene have been described, but the full-length nature of some of these variants has not been determined. This gene is closely linked to other CTL/CTLD superfamily members in the natural killer gene complex region on chromosome 12p13. [provided by RefSeq, May 2011]
Function	Cell surface receptor that modulates signaling cascades and mediates tyrosine phosphorylation of target MAP kinases. [UniProt]
Calculated Mw	31 kDa
PTM	Highly N-glycosylated. Glycosylation varies between cell types. [UniProt]
Cellular Localization	Cell membrane; Single-pass type II membrane protein. Note=Ligand binding leads to internalization. [UniProt]

Images



ARG59755 anti-CLEC12A antibody WB image

Western blot: 35 µg of U937 cell lysate (in RIPA buffer) stained with ARG59755 anti-CLEC12A antibody at 0.3 µg/ml dilution and incubated at RT for 1 hour.