

ARG59695 anti-Betatrophin antibody

Package: 50 µg
Store at: -20°C

Summary

Product Description	Rabbit Polyclonal antibody recognizes Betatrophin
Tested Reactivity	Ms, Rat
Tested Application	IHC-P, WB
Specificity	Betatrophin antibody is human, mouse and rat reactive. At least three isoforms of Betatrophin are known to exist; this antibody will detect the two largest isoforms.
Host	Rabbit
Clonality	Polyclonal
Isotype	IgG
Target Name	Betatrophin
Species	Human
Immunogen	A 16 amino acid peptide within aa. 40 - 90 of Human Betatrophin.
Conjugation	Un-conjugated
Alternate Names	Lipasin; Betatrophin; PRO1185; Refeeding-induced fat and liver protein; PVPA599; Angiotensin-like protein 8; RIFL; TD26; ANGPTL8

Application Instructions

Application table	Application	Dilution
	IHC-P	5 - 20 µg/ml
	WB	1 - 2 µg/ml
Application Note	* The dilutions indicate recommended starting dilutions and the optimal dilutions or concentrations should be determined by the scientist.	
Positive Control	Rat liver	
Observed Size	22 kDa	

Properties

Form	Liquid
Purification	Affinity purification with immunogen.
Buffer	PBS and 0.02% Sodium azide.
Preservative	0.02% Sodium azide
Concentration	1 mg/ml
Storage instruction	For continuous use, store undiluted antibody at 2-8°C for up to a week. For long-term storage, aliquot and store at -20°C or below. Storage in frost free freezers is not recommended. Avoid repeated freeze/thaw cycles. Suggest spin the vial prior to opening. The antibody solution should be gently mixed

before use.

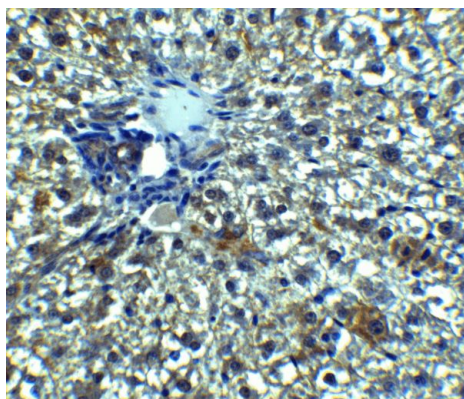
Note

For laboratory research only, not for drug, diagnostic or other use.

Bioinformation

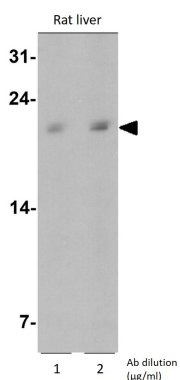
Gene Symbol	C19orf80
Gene Full Name	chromosome 19 open reading frame 80
Function	Hormone that acts as a blood lipid regulator by regulating serum triglyceride levels. May be involved in the metabolic transition between fasting and refeeding: required to direct fatty acids to adipose tissue for storage in the fed state (By similarity). [UniProt]
Calculated Mw	22 kDa
PTM	Proteolytically cleaved at the N-terminus. [UniProt]
Cellular Localization	Secreted. [UniProt]

Images



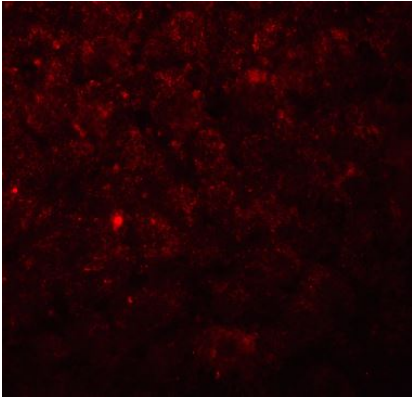
ARG59695 anti-Betatrophin antibody IHC-P image

Immunohistochemistry: Paraffin-embedded Rat liver stained with ARG59695 anti-Betatrophin antibody at 5 µg/ml dilution.



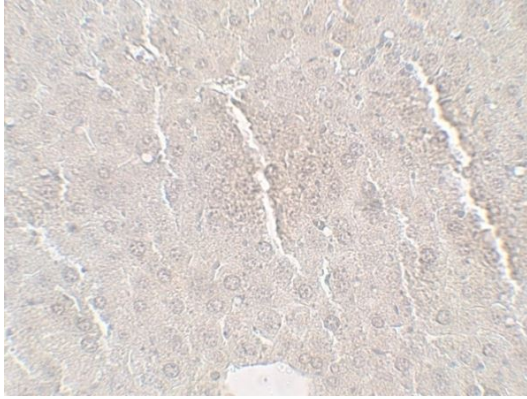
ARG59695 anti-Betatrophin antibody WB image

Western blot: Rat liver lysate stained with ARG59695 anti-Betatrophin antibody at 1 µg/ml (left) and 2 µg/ml (right) dilution.



ARG59695 anti-Betatrophin antibody IHC image

Immunohistochemistry: Rat liver stained with ARG59695 anti-Betatrophin antibody at 20 $\mu\text{g}/\text{ml}$ dilution.



ARG59695 anti-Betatrophin antibody IHC-P image

Immunohistochemistry: Paraffin-embedded Mouse liver stained with ARG59695 anti-Betatrophin antibody at 5 $\mu\text{g}/\text{ml}$ dilution.
