

## ARG59684 anti-c-Rel antibody

Package: 50 µg  
Store at: -20°C

### Summary

Product Description	Rabbit Polyclonal antibody recognizes c-Rel
Tested Reactivity	Hu, Ms, Rat
Tested Application	IHC-P, WB
Host	Rabbit
Clonality	Polyclonal
Isotype	IgG
Target Name	c-Rel
Species	Mouse
Immunogen	Synthetic peptide corresponding to aa. 268-306 of Mouse c-Rel. (DQEVSESMDFRYLPDEKDAYGNKSKKQKTTLIFQKLLQD)
Conjugation	Un-conjugated
Alternate Names	Proto-oncogene c-Rel; C-Rel

### Application Instructions

Application table	Application	Dilution
	IHC-P	0.5 - 1 µg/ml
	WB	0.1 - 0.5 µg/ml

**Application Note**  
IHC-P: Antigen Retrieval: By heat mediation.  
\* The dilutions indicate recommended starting dilutions and the optimal dilutions or concentrations should be determined by the scientist.

### Properties

Form	Liquid
Purification	Affinity purification with immunogen.
Buffer	0.9% NaCl, 0.2% Na <sub>2</sub> HPO <sub>4</sub> , 0.05% Sodium azide and 5% BSA.
Preservative	0.05% Sodium azide
Stabilizer	5% BSA
Concentration	0.5 mg/ml
Storage instruction	For continuous use, store undiluted antibody at 2-8°C for up to a week. For long-term storage, aliquot and store at -20°C or below. Storage in frost free freezers is not recommended. Avoid repeated freeze/thaw cycles. Suggest spin the vial prior to opening. The antibody solution should be gently mixed before use.
Note	For laboratory research only, not for drug, diagnostic or other use.

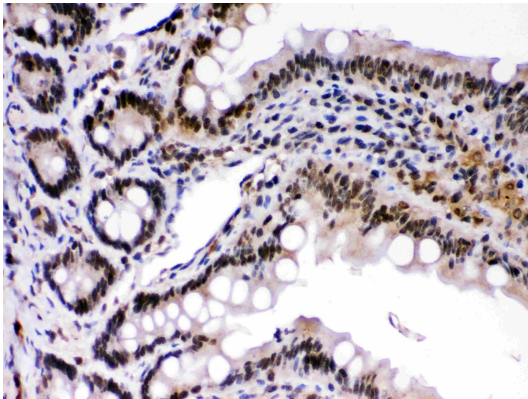
## Bioinformatics

---

Gene Symbol	REL
Gene Full Name	v-rel avian reticuloendotheliosis viral oncogene homolog
Background	This gene encodes a protein that belongs to the Rel homology domain/immunoglobulin-like fold, plexin, transcription factor (RHD/IPT) family. Members of this family regulate genes involved in apoptosis, inflammation, the immune response, and oncogenic processes. This proto-oncogene plays a role in the survival and proliferation of B lymphocytes. Mutation or amplification of this gene is associated with B-cell lymphomas, including Hodgkin's lymphoma. Single nucleotide polymorphisms in this gene are associated with susceptibility to ulcerative colitis and rheumatoid arthritis. Alternative splicing results in multiple transcript variants encoding different isoforms. [provided by RefSeq, Apr 2014]
Function	Proto-oncogene that may play a role in differentiation and lymphopoiesis. NF-kappa-B is a pleiotropic transcription factor which is present in almost all cell types and is involved in many biological processes such as inflammation, immunity, differentiation, cell growth, tumorigenesis and apoptosis. NF-kappa-B is a homo- or heterodimeric complex formed by the Rel-like domain-containing proteins RELA/p65, RELB, NFKB1/p105, NFKB1/p50, REL and NFKB2/p52. The dimers bind at kappa-B sites in the DNA of their target genes and the individual dimers have distinct preferences for different kappa-B sites that they can bind with distinguishable affinity and specificity. Different dimer combinations act as transcriptional activators or repressors, respectively. NF-kappa-B is controlled by various mechanisms of post-translational modification and subcellular compartmentalization as well as by interactions with other cofactors or corepressors. NF-kappa-B complexes are held in the cytoplasm in an inactive state complexed with members of the NF-kappa-B inhibitor (I-kappa-B) family. In a conventional activation pathway, I-kappa-B is phosphorylated by I-kappa-B kinases (IKKs) in response to different activators, subsequently degraded thus liberating the active NF-kappa-B complex which translocates to the nucleus. The NF-kappa-B heterodimer RELA/p65-c-Rel is a transcriptional activator. [UniProt]
Calculated Mw	69 kDa
Cellular Localization	Nucleus. [UniProt]

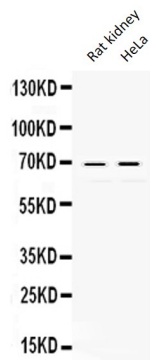
## Images

---



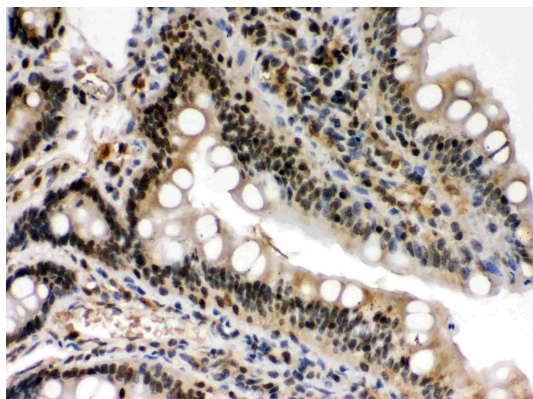
ARG59684 anti-c-Rel antibody IHC-P image

Immunohistochemistry: Paraffin-embedded Mouse intestine stained with ARG59684 anti-c-Rel antibody.



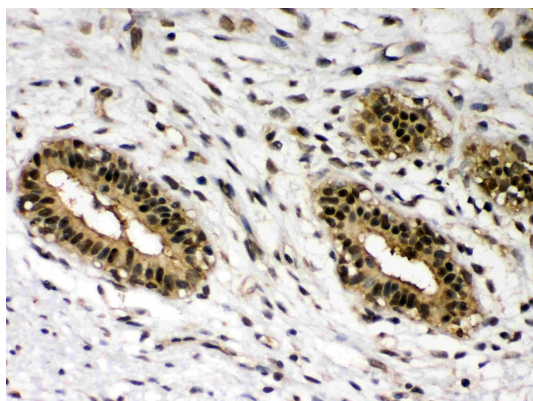
#### ARG59684 anti-c-Rel antibody WB image

Western blot: 50  $\mu$ g of Rat kidney and 40  $\mu$ g of HeLa whole cell lysates stained with ARG59684 anti-c-Rel antibody at 0.5  $\mu$ g/ml dilution.



#### ARG59684 anti-c-Rel antibody IHC-P image

Immunohistochemistry: Paraffin-embedded Rat intestine stained with ARG59684 anti-c-Rel antibody.



#### ARG59684 anti-c-Rel antibody IHC-P image

Immunohistochemistry: Paraffin-embedded Human mammary cancer stained with ARG59684 anti-c-Rel antibody.