

ARG59681 anti-KIN / Kin17 antibody

Package: 50 µg
Store at: -20°C

Summary

Product Description	Rabbit Polyclonal antibody recognizes KIN / Kin17
Tested Reactivity	Hu, Ms
Tested Application	WB
Host	Rabbit
Clonality	Polyclonal
Isotype	IgG
Target Name	KIN / Kin17
Species	Human
Immunogen	Recombinant protein corresponding to K3-K202 of Human KIN.
Conjugation	Un-conjugated
Alternate Names	DNA/RNA-binding protein KIN17; KIN, antigenic determinant of recA protein homolog; Rts2; KIN17; Binding to curved DNA; BTCDD

Application Instructions

Application table	Application	Dilution
	WB	0.1 - 0.5 µg/ml
Application Note	* The dilutions indicate recommended starting dilutions and the optimal dilutions or concentrations should be determined by the scientist.	

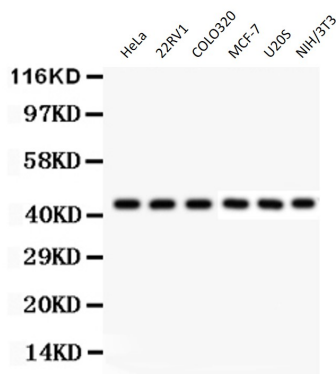
Properties

Form	Liquid
Purification	Affinity purification with immunogen.
Buffer	0.9% NaCl, 0.2% Na ₂ HPO ₄ , 0.05% Sodium azide and 5% BSA.
Preservative	0.05% Sodium azide
Stabilizer	5% BSA
Concentration	0.5 mg/ml
Storage instruction	For continuous use, store undiluted antibody at 2-8°C for up to a week. For long-term storage, aliquot and store at -20°C or below. Storage in frost free freezers is not recommended. Avoid repeated freeze/thaw cycles. Suggest spin the vial prior to opening. The antibody solution should be gently mixed before use.
Note	For laboratory research only, not for drug, diagnostic or other use.

Bioinformation

Gene Symbol	KIN
Gene Full Name	Kin17 DNA and RNA binding protein
Background	The protein encoded by this gene is a nuclear protein that forms intranuclear foci during proliferation and is redistributed in the nucleoplasm during the cell cycle. Short-wave ultraviolet light provokes the relocalization of the protein, suggesting its participation in the cellular response to DNA damage. Originally selected based on protein-binding with RecA antibodies, the mouse protein presents a limited similarity with a functional domain of the bacterial RecA protein, a characteristic shared by this human ortholog. Alternative splicing of this gene results in multiple transcript variants. [provided by RefSeq, Jan 2012]
Function	Involved in DNA replication and the cellular response to DNA damage. May participate in DNA replication factories and create a bridge between DNA replication and repair mediated by high molecular weight complexes. May play a role in illegitimate recombination and regulation of gene expression. May participate in mRNA processing. Binds, in vitro, to double-stranded DNA. Also shown to bind preferentially to curved DNA in vitro and in vivo (By similarity). Binds via its C-terminal domain to RNA in vitro. [UniProt]
Calculated Mw	45 kDa
Cellular Localization	Nucleus. Cytoplasm. Note=During S phase, strongly associated with the nuclear matrix, and to chromosomal DNA in the presence of DNA damage. Also shows cytoplasmic localization in elongated spermatids. [UniProt]

Images



ARG59681 anti-KIN / Kin17 antibody WB image

Western blot: 40 µg of HeLa, 22RV1, COLO320, MCF-7, U20S and NIH/3T3 whole cell lysates stained with ARG59681 anti-KIN / Kin17 antibody at 0.5 µg/ml dilution.