

## ARG59659 anti-Betatrophin antibody

Package: 50 µg  
Store at: -20°C

### Summary

Product Description	Rabbit Polyclonal antibody recognizes Betatrophin
Tested Reactivity	Hu
Tested Application	WB
Host	Rabbit
Clonality	Polyclonal
Isotype	IgG
Target Name	Betatrophin
Species	Human
Immunogen	Recombinant protein corresponding to A22-A198 of Human Betatrophin.
Conjugation	Un-conjugated
Alternate Names	Lipasin; Betatrophin; PRO1185; Refeeding-induced fat and liver protein; PVPA599; Angiotensin-like protein 8; RIFL; TD26; ANGPTL8

### Application Instructions

Application table	Application	Dilution
	WB	0.1 - 0.5 µg/ml
Application Note	* The dilutions indicate recommended starting dilutions and the optimal dilutions or concentrations should be determined by the scientist.	

### Properties

Form	Liquid
Purification	Affinity purification with immunogen.
Buffer	0.9% NaCl, 0.2% Na <sub>2</sub> HPO <sub>4</sub> , 0.05% Sodium azide and 5% BSA.
Preservative	0.05% Sodium azide
Stabilizer	5% BSA
Concentration	0.5 mg/ml
Storage instruction	For continuous use, store undiluted antibody at 2-8°C for up to a week. For long-term storage, aliquot and store at -20°C or below. Storage in frost free freezers is not recommended. Avoid repeated freeze/thaw cycles. Suggest spin the vial prior to opening. The antibody solution should be gently mixed before use.
Note	For laboratory research only, not for drug, diagnostic or other use.

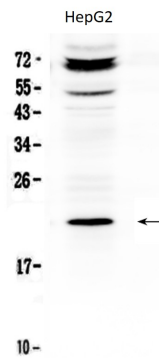
## Bioinformation

---

Gene Symbol	C19orf80
Gene Full Name	chromosome 19 open reading frame 80
Function	Hormone that acts as a blood lipid regulator by regulating serum triglyceride levels. May be involved in the metabolic transition between fasting and refeeding: required to direct fatty acids to adipose tissue for storage in the fed state (By similarity). [UniProt]
Calculated Mw	22 kDa
PTM	Proteolytically cleaved at the N-terminus. [UniProt]
Cellular Localization	Secreted. [UniProt]

## Images

---



ARG59659 anti-Betatrophin antibody WB image

Western blot: 50  $\mu$ g of sample under reducing conditions. HepG2 whole cell lysate stained with ARG59659 anti-Betatrophin antibody at 0.5  $\mu$ g/ml, overnight at 4°C.