

ARG59651 anti-HOXB6 antibody

Package: 50 µl
Store at: -20°C

Summary

Product Description	Rabbit Polyclonal antibody recognizes HOXB6
Tested Reactivity	Hu
Predict Reactivity	Ms, Rat, Dog, Gpig, Hrs, Pig, Rb
Tested Application	WB
Host	Rabbit
Clonality	Polyclonal
Isotype	IgG
Target Name	HOXB6
Species	Human
Immunogen	Synthetic peptide around the N-terminal region of Human HOXB6. (within the following region: ALSGADEQPPFHPEPRKSDCAQDKSVFGETEELKSTPVPVPMQRMNSCN)
Conjugation	Un-conjugated
Alternate Names	HOX2; Homeobox protein Hu-2; HU-2; Homeobox protein Hox-2.2; HOX2B; Homeobox protein Hox-B6; Homeobox protein Hox-2B; Hox-2.2

Application Instructions

Predict Reactivity Note	Predicted Homology Based On Immunogen Sequence: Dog: 79%; Guinea Pig: 92%; Horse: 93%; Mouse: 93%; Pig: 93%; Rabbit: 93%; Rat: 93%				
Application table	<table><thead><tr><th>Application</th><th>Dilution</th></tr></thead><tbody><tr><td>WB</td><td>0.2 - 1 µg/ml</td></tr></tbody></table>	Application	Dilution	WB	0.2 - 1 µg/ml
Application	Dilution				
WB	0.2 - 1 µg/ml				
Application Note	* The dilutions indicate recommended starting dilutions and the optimal dilutions or concentrations should be determined by the scientist.				

Properties

Form	Liquid
Purification	Affinity purified.
Buffer	PBS, 0.09% (w/v) Sodium azide and 2% Sucrose.
Preservative	0.09% (w/v) Sodium azide
Stabilizer	2% Sucrose
Concentration	Batch dependent: 0.5 - 1 mg/ml
Storage instruction	For continuous use, store undiluted antibody at 2-8°C for up to a week. For long-term storage, aliquot and store at -20°C or below. Storage in frost free freezers is not recommended. Avoid repeated freeze/thaw cycles. Suggest spin the vial prior to opening. The antibody solution should be gently mixed

before use.

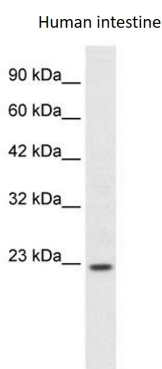
Note

For laboratory research only, not for drug, diagnostic or other use.

Bioinformation

Gene Symbol	HOXB6
Gene Full Name	homeobox B6
Background	This gene is a member of the Antp homeobox family and encodes a protein with a homeobox DNA-binding domain. It is included in a cluster of homeobox B genes located on chromosome 17. The encoded protein functions as a sequence-specific transcription factor that is involved in development, including that of lung and skin, and has been localized to both the nucleus and cytoplasm. Altered expression of this gene or a change in the subcellular localization of its protein is associated with some cases of acute myeloid leukemia and colorectal cancer. [provided by RefSeq, Jul 2008]
Function	Sequence-specific transcription factor which is part of a developmental regulatory system that provides cells with specific positional identities on the anterior-posterior axis. [UniProt]
Calculated Mw	25 kDa
Cellular Localization	Nucleus. [UniProt]

Images



ARG59651 anti-HOXB6 antibody WB image

Western blot: Human intestine lysate stained with ARG59651 anti-HOXB6 antibody at 0.2 - 1 µg/ml dilution.