

ARG59649 anti-HCFC1R1 antibody

Package: 50 µl
Store at: -20°C

Summary

| | |
|---------------------|--|
| Product Description | Rabbit Polyclonal antibody recognizes HCFC1R1 |
| Tested Reactivity | Hu |
| Predict Reactivity | Ms, Rat, Cow, Dog, Goat, Hrs, Pig |
| Tested Application | WB |
| Host | Rabbit |
| Clonality | Polyclonal |
| Isotype | IgG |
| Target Name | HCFC1R1 |
| Species | Human |
| Immunogen | Synthetic peptide around the middle region of Human HCFC1R1. (within the following region: LRGAVPMSTKRRLLEEQEPLRKQFLSEENMATHFSQLSLHNDHPYCSPPM) |
| Conjugation | Un-conjugated |
| Alternate Names | HCFC-1 beta-propeller-interacting protein; Host cell factor C1 regulator 1; HPIP |

Application Instructions

| Predict Reactivity Note | Predicted Homology Based On Immunogen Sequence: Cow: 100%; Dog: 100%; Goat: 93%; Horse: 100%; Mouse: 92%; Pig: 100%; Rat: 83% | | | | |
|-------------------------|--|-------------|----------|----|---------------|
| Application table | <table><thead><tr><th>Application</th><th>Dilution</th></tr></thead><tbody><tr><td>WB</td><td>0.2 - 1 µg/ml</td></tr></tbody></table> | Application | Dilution | WB | 0.2 - 1 µg/ml |
| Application | Dilution | | | | |
| WB | 0.2 - 1 µg/ml | | | | |
| Application Note | * The dilutions indicate recommended starting dilutions and the optimal dilutions or concentrations should be determined by the scientist. | | | | |

Properties

| | |
|---------------------|--|
| Form | Liquid |
| Purification | Affinity purified. |
| Buffer | PBS, 0.09% (w/v) Sodium azide and 2% Sucrose. |
| Preservative | 0.09% (w/v) Sodium azide |
| Stabilizer | 2% Sucrose |
| Concentration | Batch dependent: 0.5 - 1 mg/ml |
| Storage instruction | For continuous use, store undiluted antibody at 2-8°C for up to a week. For long-term storage, aliquot and store at -20°C or below. Storage in frost free freezers is not recommended. Avoid repeated freeze/thaw cycles. Suggest spin the vial prior to opening. The antibody solution should be gently mixed before use. |

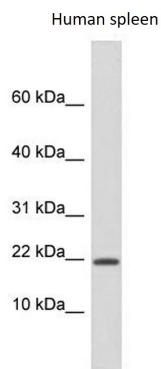
Note

For laboratory research only, not for drug, diagnostic or other use.

Bioinformation

| | |
|-----------------------|--|
| Gene Symbol | HCFC1R1 |
| Gene Full Name | host cell factor C1 regulator 1 (XPO1 dependent) |
| Function | Regulates HCFC1 activity by modulating its subcellular localization. Overexpression of HCFC1R1 leads to accumulation of HCFC1 in the cytoplasm. HCFC1R1-mediated export may provide the pool of cytoplasmic HCFC1 required for import of virion-derived VP16 into the nucleus. [UniProt] |
| Calculated Mw | 15 kDa |
| Cellular Localization | Cytoplasm. Nucleus. Note=Shuttles between the nucleus and cytoplasm in a CRM1-dependent manner. [UniProt] |

Images



ARG59649 anti-HCFC1R1 antibody WB image

Western blot: Human spleen lysate stained with ARG59649 anti-HCFC1R1 antibody at 0.2 - 1 μ g/ml dilution.