

## ARG59644 anti-GIF / Gastric intrinsic factor antibody

Package: 50 µl  
Store at: -20°C

### Summary

Product Description	Rabbit Polyclonal antibody recognizes GIF / Gastric intrinsic factor
Tested Reactivity	Ms
Predict Reactivity	Hu, Rat, Cow, Dog, Gpig, Hrs, Pig, Rb
Tested Application	WB
Host	Rabbit
Clonality	Polyclonal
Isotype	IgG
Target Name	GIF / Gastric intrinsic factor
Species	Mouse
Immunogen	Synthetic peptide around the C-terminal region of Mouse GIF. (within the following region: LIVSSINNAENVNHKTYWEFLSGKTPLEGVAYYIPFNHEHITANFTQY)
Conjugation	Un-conjugated
Alternate Names	IF; GIF; INF; IFMH; TCN3

### Application Instructions

Predict Reactivity Note	Predicted Homology Based On Immunogen Sequence: Cow: 100%; Dog: 92%; Guinea Pig: 93%; Horse: 100%; Human: 100%; Pig: 100%; Rabbit: 93%; Rat: 100%				
Application table	<table><thead><tr><th>Application</th><th>Dilution</th></tr></thead><tbody><tr><td>WB</td><td>1 µg/ml</td></tr></tbody></table>	Application	Dilution	WB	1 µg/ml
Application	Dilution				
WB	1 µg/ml				
Application Note	* The dilutions indicate recommended starting dilutions and the optimal dilutions or concentrations should be determined by the scientist.				

### Properties

Form	Liquid
Purification	Affinity purified.
Buffer	PBS, 0.09% (w/v) Sodium azide and 2% Sucrose.
Preservative	0.09% (w/v) Sodium azide
Stabilizer	2% Sucrose
Concentration	Batch dependent: 0.5 - 1 mg/ml
Storage instruction	For continuous use, store undiluted antibody at 2-8°C for up to a week. For long-term storage, aliquot and store at -20°C or below. Storage in frost free freezers is not recommended. Avoid repeated freeze/thaw cycles. Suggest spin the vial prior to opening. The antibody solution should be gently mixed before use.

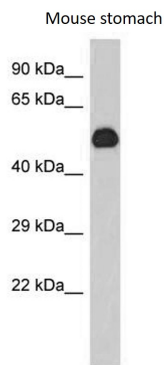
Note For laboratory research only, not for drug, diagnostic or other use.

## Bioinformation

---

Gene Symbol	CBLIF
Gene Full Name	cobalamin binding intrinsic factor
Background	This gene is a member of the cobalamin transport protein family. It encodes a glycoprotein secreted by parietal cells of the gastric mucosa and is required for adequate absorption of vitamin B12. Vitamin B12 is necessary for erythrocyte maturation and mutations in this gene may lead to congenital pernicious anemia. [provided by RefSeq, Jul 2008]
Function	Promotes absorption of the essential vitamin cobalamin (Cbl) in the ileum. After interaction with CUBN, the GIF-cobalamin complex is internalized via receptor-mediated endocytosis. [UniProt]
Calculated Mw	45 kDa
Cellular Localization	Extracellular region or secreted. [UniProt]

## Images



ARG59644 anti-GIF / Gastric intrinsic factor antibody WB image

Western blot: Mouse stomach lysate stained with ARG59644 anti-GIF / Gastric intrinsic factor antibody at 1  $\mu$ g/ml dilution.