

ARG59639 anti-GUSB / beta glucuronidase antibody

Package: 100 µl
Store at: -20°C

Summary

Product Description	Rabbit Polyclonal antibody recognizes GUSB / beta glucuronidase
Tested Reactivity	Hu
Predict Reactivity	Pig
Tested Application	FACS, IHC-P, WB
Host	Rabbit
Clonality	Polyclonal
Isotype	IgG
Target Name	GUSB / beta glucuronidase
Species	Human
Immunogen	KLH-conjugated synthetic peptide corresponding to aa. 335-362 of Human GUSB.
Conjugation	Un-conjugated
Alternate Names	Beta-G1; MPS7; BG; EC 3.2.1.31; Beta-glucuronidase

Application Instructions

Application table	Application	Dilution
	FACS	1:10 - 1:50
	IHC-P	1:50 - 1:100
	WB	1:1000
Application Note	* The dilutions indicate recommended starting dilutions and the optimal dilutions or concentrations should be determined by the scientist.	
Positive Control	K562	

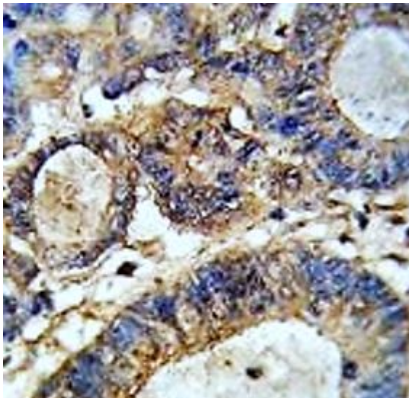
Properties

Form	Liquid
Purification	Purification with Protein A and immunogen peptide.
Buffer	PBS and 0.09% (W/V) Sodium azide.
Preservative	0.09% (W/V) Sodium azide
Storage instruction	For continuous use, store undiluted antibody at 2-8°C for up to a week. For long-term storage, aliquot and store at -20°C or below. Storage in frost free freezers is not recommended. Avoid repeated freeze/thaw cycles. Suggest spin the vial prior to opening. The antibody solution should be gently mixed before use.
Note	For laboratory research only, not for drug, diagnostic or other use.

Bioinformation

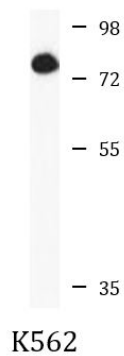
Gene Symbol	GUSB
Gene Full Name	glucuronidase, beta
Background	This gene encodes a hydrolase that degrades glycosaminoglycans, including heparan sulfate, dermatan sulfate, and chondroitin-4,6-sulfate. The enzyme forms a homotetramer that is localized to the lysosome. Mutations in this gene result in mucopolysaccharidosis type VII. Alternative splicing results in multiple transcript variants. There are many pseudogenes of this locus in the human genome.[provided by RefSeq, May 2014]
Function	Plays an important role in the degradation of dermatan and keratan sulfates. [UniProt]
Calculated Mw	75 kDa
PTM	N-linked glycosylated with 3 to 4 oligosaccharide chains. [UniProt]
Cellular Localization	Lysosome. [UniProt]

Images



ARG59639 anti-GUSB / beta glucuronidase antibody IHC-P image

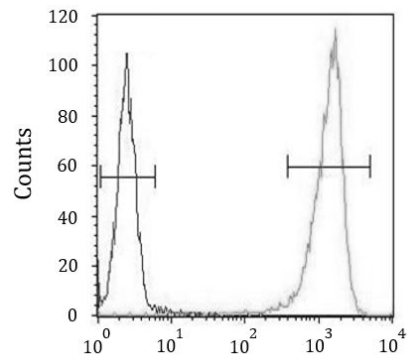
Immunohistochemistry: Formalin-fixed and paraffin-embedded Human colon carcinoma stained with ARG59639 anti-GUSB / beta glucuronidase antibody.



ARG59639 anti-GUSB / beta glucuronidase antibody WB image

Western blot: 35 µg of K562 cell lysate stained with ARG59639 anti-GUSB / beta glucuronidase antibody.

ARG59639 anti-GUSB / beta glucuronidase antibody FACS image



Flow Cytometry: WiDr cells stained with ARG59639 anti-GUSB / beta glucuronidase antibody (right histogram) or without primary antibody as control (left histogram), followed by incubation with FITC labelled secondary antibody.