

ARG59636 anti-CADM4 antibody

Package: 50 µl
Store at: -20°C

Summary

Product Description	Rabbit Polyclonal antibody recognizes CADM4
Tested Reactivity	Hu
Tested Application	WB
Host	Rabbit
Clonality	Polyclonal
Isotype	IgG
Target Name	CADM4
Species	Human
Immunogen	KLH-conjugated synthetic peptide corresponding to aa. 321-380 of Human CADM4.
Conjugation	Un-conjugated
Alternate Names	IGSF4C; NECL4; Cell adhesion molecule 4; IgSF4C; Necl-4; Nectin-like protein 4; TSLC1-like protein 2; Immunoglobulin superfamily member 4C; TSL2; NECL-4; synCAM4

Application Instructions

Application table	Application	Dilution
	WB	1:1000
Application Note	* The dilutions indicate recommended starting dilutions and the optimal dilutions or concentrations should be determined by the scientist.	
Positive Control	Human brain	

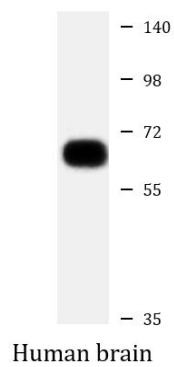
Properties

Form	Liquid
Purification	Purified
Buffer	PBS (pH 7.2), 0.1% Sodium azide and 50% Glycerol.
Preservative	0.1% Sodium azide
Stabilizer	50% Glycerol
Storage instruction	For continuous use, store undiluted antibody at 2-8°C for up to a week. For long-term storage, aliquot and store at -20°C. Storage in frost free freezers is not recommended. Avoid repeated freeze/thaw cycles. Suggest spin the vial prior to opening. The antibody solution should be gently mixed before use.
Note	For laboratory research only, not for drug, diagnostic or other use.

Bioinformation

Gene Symbol	CADM4
Gene Full Name	cell adhesion molecule 4
Function	Involved in the cell-cell adhesion. Has calcium- and magnesium-independent cell-cell adhesion activity. May have tumor-suppressor activity. [UniProt]
Calculated Mw	43 kDa
PTM	N-glycosylated. [UniProt]
Cellular Localization	Membrane; Single-pass type I membrane protein. [UniProt]

Images



ARG59636 anti-CADM4 antibody WB image

Western blot: 20 µg of Human brain lysate stained with ARG59636 anti-CADM4 antibody at 1:1000 dilution.