

ARG59634 anti-E-Ras antibody

Package: 100 µl
Store at: -20°C

Summary

Product Description	Rabbit Polyclonal antibody recognizes E-Ras
Tested Reactivity	Ms, Rat
Tested Application	WB
Host	Rabbit
Clonality	Polyclonal
Isotype	IgG
Target Name	E-Ras
Species	Mouse
Immunogen	KLH-conjugated synthetic peptide between aa. 202-236 of Mouse E-Ras.
Conjugation	Un-conjugated
Alternate Names	E-Ras; Embryonic stem cell-expressed Ras; HRAS2; GTPase ERas; HRASP

Application Instructions

Application table	Application	Dilution
	WB	1:1000 - 1:2000
Application Note	* The dilutions indicate recommended starting dilutions and the optimal dilutions or concentrations should be determined by the scientist.	
Positive Control	Mouse heart	

Properties

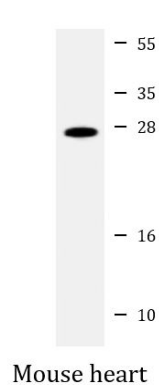
Form	Liquid
Purification	Purification with Protein A and immunogen peptide.
Buffer	PBS and 0.09% (W/V) Sodium azide.
Preservative	0.09% (W/V) Sodium azide
Storage instruction	For continuous use, store undiluted antibody at 2-8°C for up to a week. For long-term storage, aliquot and store at -20°C or below. Storage in frost free freezers is not recommended. Avoid repeated freeze/thaw cycles. Suggest spin the vial prior to opening. The antibody solution should be gently mixed before use.
Note	For laboratory research only, not for drug, diagnostic or other use.

Bioinformatics

Gene Symbol	ERAS
-------------	------

Gene Full Name	ES cell expressed Ras
Background	This gene encodes a constitutively active member of the small GTPase Ras protein family. The encoded protein activates the phosphatidylinositol 3-kinase signal transduction pathway in undifferentiated stem cells, but is not expressed in differentiated cells. This gene may be involved in cancer and chemotherapy resistance. [provided by RefSeq, Dec 2012]
Function	Ras proteins bind GDP/GTP and possess intrinsic GTPase activity. Plays an important role in the tumor-like growth properties of embryonic stem cells (By similarity). [UniProt]
Calculated Mw	25 kDa
Cellular Localization	Cell membrane; Lipid-anchor; Cytoplasmic side. [UniProt]

Images



ARG59634 anti-E-Ras antibody WB image

Western blot: 20 µg of Mouse heart lysate stained with ARG59634 anti-E-Ras antibody at 1:2000 dilution.