

## ARG59611 anti-ART1 antibody

Package: 100 µl

Store at: -20°C

### Summary

Product Description	Rabbit Polyclonal antibody recognizes ART1
Tested Reactivity	Hu, Ms
Tested Application	ICC/IF, IHC-P, WB
Host	Rabbit
Clonality	Polyclonal
Isotype	IgG
Target Name	ART1
Species	Human
Immunogen	Recombinant fusion protein corresponding to aa. 23-295 of Human ART1 (NP_004305.2).
Conjugation	Un-conjugated
Alternate Names	RT6; ART2; ARTC1; CD296; GPI-linked NAD(P)(+)-arginine ADP-ribosyltransferase 1; EC 2.4.2.31; ADP-ribosyltransferase C2 and C3 toxin-like 1; ARTC1; Mono(ADP-ribosyl)transferase 1; CD antigen CD296

### Application Instructions

Application table	Application	Dilution
	ICC/IF	1:50 - 1:200
	IHC-P	1:50 - 1:200
	WB	1:500 - 1:2000
Application Note	* The dilutions indicate recommended starting dilutions and the optimal dilutions or concentrations should be determined by the scientist.	
Positive Control	HepG2	
Observed Size	36 kDa	

### Properties

Form	Liquid
Purification	Affinity purified.
Buffer	PBS (pH 7.3), 0.02% Sodium azide and 50% Glycerol.
Preservative	0.02% Sodium azide
Stabilizer	50% Glycerol
Storage instruction	For continuous use, store undiluted antibody at 2-8°C for up to a week. For long-term storage, aliquot and store at -20°C. Storage in frost free freezers is not recommended. Avoid repeated freeze/thaw cycles. Suggest spin the vial prior to opening. The antibody solution should be gently mixed before use.

**Note**

For laboratory research only, not for drug, diagnostic or other use.

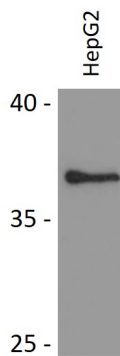
## Bioinformation

---

Gene Symbol	ART1
Gene Full Name	ADP-ribosyltransferase 1
Background	ADP-ribosyltransferase catalyzes the ADP-ribosylation of arginine residues in proteins. Mono-ADP-ribosylation is a posttranslational modification of proteins that is interfered with by a variety of bacterial toxins including cholera, pertussis, and heat-labile enterotoxins of <i>E. coli</i> . The amino acid sequence consists of predominantly hydrophobic N- and C-terminal regions, which is characteristic of glycosylphosphatidylinositol (GPI)-anchored proteins. This gene was previously designated ART2. [provided by RefSeq, Jul 2008]
Function	Has ADP-ribosyltransferase activity toward GLP1R. [UniProt]
Calculated Mw	36 kDa
Cellular Localization	Sarcoplasmic reticulum membrane; Lipid-anchor, GPI-anchor. [UniProt]

## Images

---



ARG59611 anti-ART1 antibody WB image

Western blot: 25 µg of HepG2 cell lysates stained with ARG59611 anti-ART1 antibody at 1:1000 dilution.