

ARG59572 anti-PRMT2 antibody

Package: 50 µl
Store at: -20°C

Summary

Product Description	Rabbit Polyclonal antibody recognizes PRMT2
Tested Reactivity	Hu, Ms, Rat
Tested Application	ICC/IF, IHC-P, WB
Host	Rabbit
Clonality	Polyclonal
Isotype	IgG
Target Name	PRMT2
Species	Human
Immunogen	Recombinant fusion protein corresponding to aa. 1-300 of Human PRMT2 (NP_996845.1).
Conjugation	Un-conjugated
Alternate Names	EC 2.1.1.125; Histone-arginine N-methyltransferase PRMT2; HRMT1L1; Protein arginine N-methyltransferase 2; EC 2.1.1.-

Application Instructions

Application table	Application	Dilution
	ICC/IF	1:50 - 1:200
	IHC-P	1:50 - 1:200
	WB	1:500 - 1:2000
Application Note	* The dilutions indicate recommended starting dilutions and the optimal dilutions or concentrations should be determined by the scientist.	
Positive Control	Mouse lung	

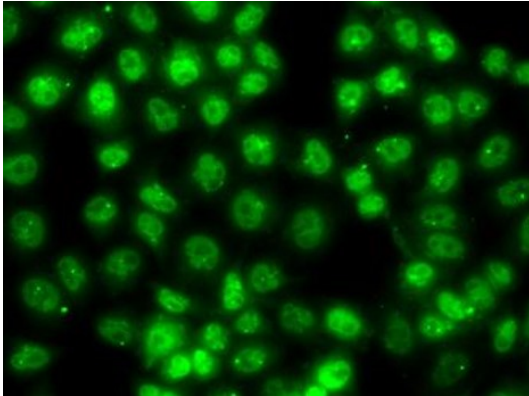
Properties

Form	Liquid
Purification	Affinity purified.
Buffer	PBS (pH 7.3), 0.02% Sodium azide and 50% Glycerol.
Preservative	0.02% Sodium azide
Stabilizer	50% Glycerol
Storage instruction	For continuous use, store undiluted antibody at 2-8°C for up to a week. For long-term storage, aliquot and store at -20°C. Storage in frost free freezers is not recommended. Avoid repeated freeze/thaw cycles. Suggest spin the vial prior to opening. The antibody solution should be gently mixed before use.
Note	For laboratory research only, not for drug, diagnostic or other use.

Bioinformation

Gene Symbol	PRMT2
Gene Full Name	protein arginine methyltransferase 2
Function	Arginine methyltransferase that methylates the guanidino nitrogens of arginyl residues in proteins such as STAT3, FBL, histone H4. Acts as a coactivator (with NCOA2) of the androgen receptor (AR)-mediated transactivation. Acts as a coactivator (with estrogen) of estrogen receptor (ER)-mediated transactivation. Enhances PGR, PPARG, RARA-mediated transactivation. May inhibit NF-kappa-B transcription and promote apoptosis. Represses E2F1 transcriptional activity (in a RB1-dependent manner). May be involved in growth regulation. [UniProt]
Calculated Mw	49 kDa
Cellular Localization	Isoform 1: Cytoplasm. Nucleus. Note=Translocates from the cytoplasm to the nucleus, after hormone exposure. Excluded from nucleolus. Isoform PRMT2Alpha: Nucleus. Note=Excluded from nucleolus. Isoform PRMT2Beta: Cytoplasm. Nucleus. Nucleus, nucleolus. Isoform PRMT2Gamma: Nucleus. Note=Excluded from nucleolus. Isoform PRMT2L2: Cytoplasm. Nucleus. Note=Predominantly cytoplasmic. [UniProt]

Images



ARG59572 anti-PRMT2 antibody ICC/IF image

Immunofluorescence: HeLa cells stained with ARG59572 anti-PRMT2 antibody.