

## ARG59549 anti-SFTPA1 + SFTPA2 antibody

Package: 50 µg  
Store at: -20°C

### Summary

Product Description	Rabbit Polyclonal antibody recognizes SFTPA1 + SFTPA2
Tested Reactivity	Hu, Ms, Rat
Tested Application	IHC-Fr, IHC-P
Host	Rabbit
Clonality	Polyclonal
Isotype	IgG
Target Name	SFTPA1 + SFTPA2
Species	Human
Immunogen	Synthetic peptide corresponding to aa. 206-237 of Human SFTPA1/2. (VNYTNWYRGEPAGRGKEQCVEMYTDGQWDRN)
Conjugation	Un-conjugated
Alternate Names	SFTPA1B; SP-A; COLEC4; Pulmonary surfactant-associated protein A1; PSAP; PSPA; 35 kDa pulmonary surfactant-associated protein; SFTP1; PSP-A; SPA; SPA1; Alveolar proteinosis protein; SP-A1; Collectin-4; PSAP; PSPA; SP-A; SPA2; PSP-A; SFTP1; SP-2A; SPAII; COLEC5; SFTPA2B

### Application Instructions

Application table	Application	Dilution
	IHC-Fr	0.5 - 1 µg/ml
	IHC-P	0.5 - 1 µg/ml
Application Note	IHC-P: Antigen Retrieval: By heat mediation. * The dilutions indicate recommended starting dilutions and the optimal dilutions or concentrations should be determined by the scientist.	

### Properties

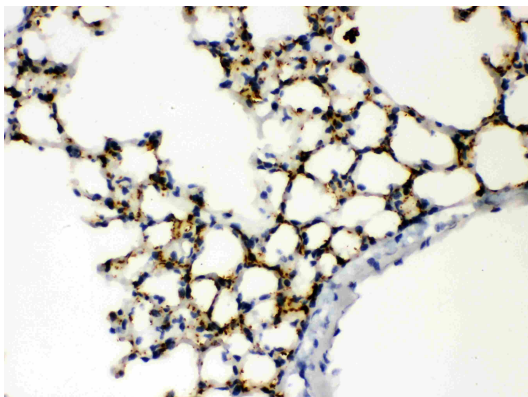
Form	Liquid
Purification	Affinity purification with immunogen.
Buffer	0.9% NaCl, 0.2% Na <sub>2</sub> HPO <sub>4</sub> , 0.05% Sodium azide and 5% BSA.
Preservative	0.05% Sodium azide
Stabilizer	5% BSA
Concentration	0.5 mg/ml
Storage instruction	For continuous use, store undiluted antibody at 2-8°C for up to a week. For long-term storage, aliquot and store at -20°C or below. Storage in frost free freezers is not recommended. Avoid repeated freeze/thaw cycles. Suggest spin the vial prior to opening. The antibody solution should be gently mixed before use.

Note For laboratory research only, not for drug, diagnostic or other use.

## Bioinformation

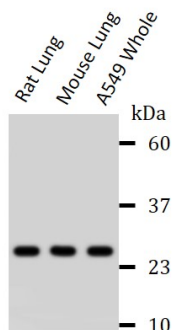
Gene Symbol	SFTPA1; SFTPA2
Gene Full Name	surfactant protein A1; surfactant protein A2
Background	This gene encodes a lung surfactant protein that is a member of a subfamily of C-type lectins called collectins. The encoded protein binds specific carbohydrate moieties found on lipids and on the surface of microorganisms. This protein plays an essential role in surfactant homeostasis and in the defense against respiratory pathogens. Mutations in this gene are associated with idiopathic pulmonary fibrosis. Alternate splicing results in multiple transcript variants. [provided by RefSeq, May 2010]
Function	In presence of calcium ions, it binds to surfactant phospholipids and contributes to lower the surface tension at the air-liquid interface in the alveoli of the mammalian lung and is essential for normal respiration. [UniProt]
Calculated Mw	SFTPA1 and SFTPA2: 26 kDa
PTM	N-acetylated. [UniProt]
Cellular Localization	Secreted, extracellular space, extracellular matrix. Secreted, extracellular space, surface film. [UniProt]

## Images



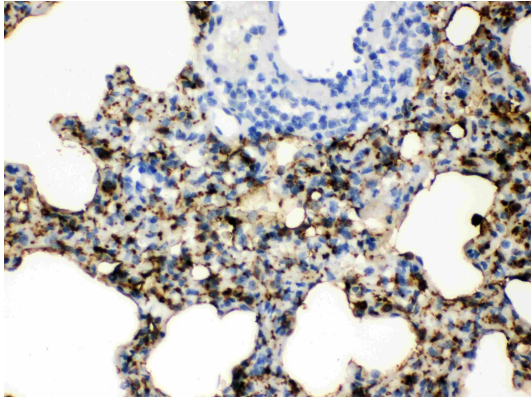
ARG59549 anti-SFTPA1 + SFTPA2 antibody IHC-P image

Immunohistochemistry: Paraffin-embedded Mouse lung stained with ARG59549 anti-SFTPA1 + SFTPA2 antibody.



ARG59549 anti-SFTPA1 + SFTPA2 antibody WB image

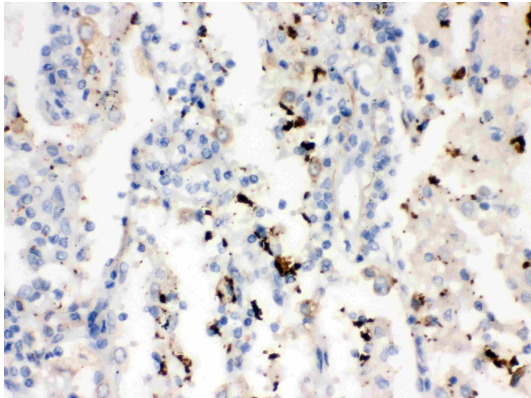
Western blot: Rat Lung, Mouse Lung and A549 stained with ARG59549 anti-SFTPA1 + SFTPA2 antibody at 1:1000 dilution.



ARG59549 anti-SFTP A1 + SFTP A2 antibody IHC-P image

Immunohistochemistry: Paraffin-embedded Rat lung stained with ARG59549 anti-SFTP A1 + SFTP A2 antibody.

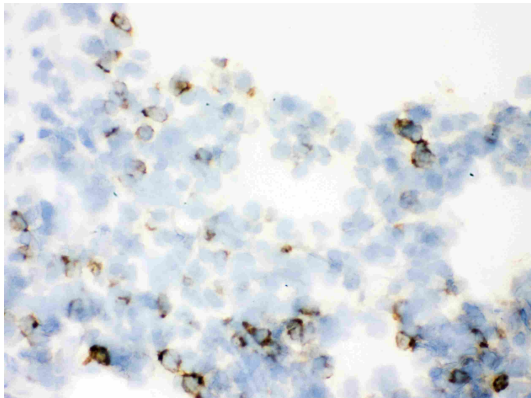
---



ARG59549 anti-SFTP A1 + SFTP A2 antibody IHC-P image

Immunohistochemistry: Paraffin-embedded Human lung cancer stained with ARG59549 anti-SFTP A1 + SFTP A2 antibody.

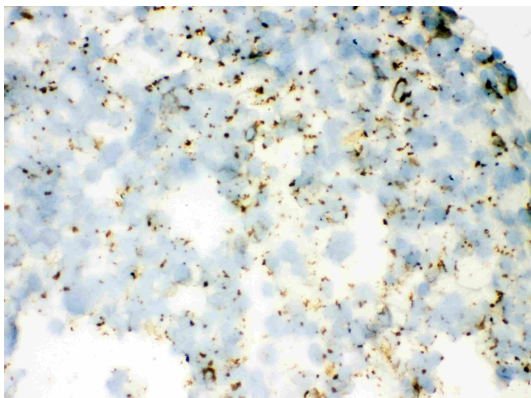
---



ARG59549 anti-SFTP A1 + SFTP A2 antibody IHC-Fr image

Immunohistochemistry: Frozen section of Rat lung stained with ARG59549 anti-SFTP A1 + SFTP A2 antibody.

---



ARG59549 anti-SFTP A1 + SFTP A2 antibody IHC-Fr image

Immunohistochemistry: Frozen section of Mouse lung stained with ARG59549 anti-SFTP A1 + SFTP A2 antibody.

---