

ARG59543 anti-GRK2 antibody

Package: 50 µg
Store at: -20°C

Summary

Product Description	Rabbit Polyclonal antibody recognizes GRK2
Tested Reactivity	Hu, Ms, Rat
Tested Application	FACS, ICC/IF, IHC-P, WB
Host	Rabbit
Clonality	Polyclonal
Isotype	IgG
Target Name	GRK2
Species	Human
Immunogen	Synthetic peptide corresponding to a sequence of Human GRK2. (DSDPELVQWKKELRDAYREAQQLVQRVPMKMKNK)
Conjugation	Un-conjugated
Alternate Names	BETA-ARK1; Beta-adrenergic receptor kinase 1; GRK2; BARK1; EC 2.7.11.15; Beta-ARK-1; G-protein coupled receptor kinase 2

Application Instructions

Application table	Application	Dilution
	FACS	1:150 - 1:500
	ICC/IF	1:200 - 1:1000
	IHC-P	1:200 - 1:1000
	WB	0.1 - 0.5 µg/ml

Application Note IHC-P: Antigen Retrieval: Heat mediation was performed in Citrate buffer (pH 6.0) for 20 min.
* The dilutions indicate recommended starting dilutions and the optimal dilutions or concentrations should be determined by the scientist.

Properties

Form	Liquid
Purification	Affinity purification with immunogen.
Buffer	0.9% NaCl, 0.2% Na ₂ HPO ₄ , 0.05% Sodium azide and 4% Trehalose.
Preservative	0.05% Sodium azide
Stabilizer	4% Trehalose
Concentration	0.5 mg/ml
Storage instruction	For continuous use, store undiluted antibody at 2-8°C for up to a week. For long-term storage, aliquot and store at -20°C or below. Storage in frost free freezers is not recommended. Avoid repeated

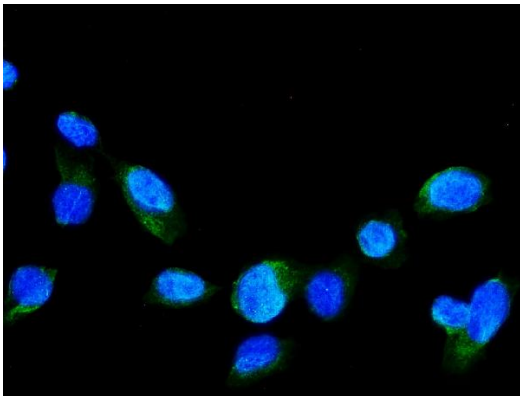
freeze/thaw cycles. Suggest spin the vial prior to opening. The antibody solution should be gently mixed before use.

Note For laboratory research only, not for drug, diagnostic or other use.

Bioinformation

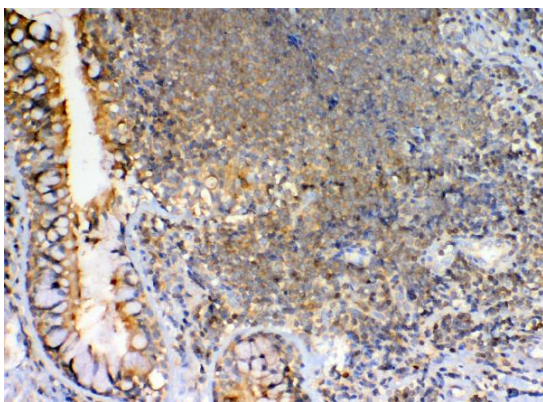
Gene Symbol	ADRBK1
Gene Full Name	adrenergic, beta, receptor kinase 1
Background	The product of this gene phosphorylates the beta-2-adrenergic receptor and appears to mediate agonist-specific desensitization observed at high agonist concentrations. This protein is an ubiquitous cytosolic enzyme that specifically phosphorylates the activated form of the beta-adrenergic and related G-protein-coupled receptors. Abnormal coupling of beta-adrenergic receptor to G protein is involved in the pathogenesis of the failing heart. [provided by RefSeq, Jul 2008]
Function	Specifically phosphorylates the agonist-occupied form of the beta-adrenergic and closely related receptors, probably inducing a desensitization of them. Key regulator of LPAR1 signaling. Competes with RALA for binding to LPAR1 thus affecting the signaling properties of the receptor. Desensitizes LPAR1 and LPAR2 in a phosphorylation-independent manner. [UniProt]
Calculated Mw	80 kDa
Cellular Localization	Cytoplasm. Cell membrane. [UniProt]

Images



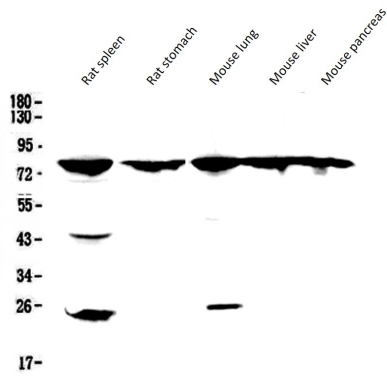
ARG59543 anti-GRK2 antibody ICC/IF image

Immunofluorescence: U2OS cells were blocked with 10% goat serum and then stained with ARG59543 anti-GRK2 antibody (green) at 2 µg/ml dilution, overnight at 4°C. DAPI (blue) for nuclear staining.



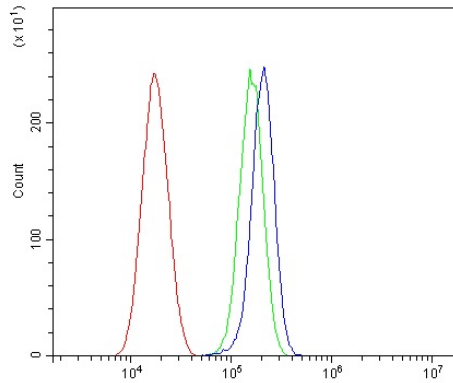
ARG59543 anti-GRK2 antibody IHC-P image

Immunohistochemistry: Paraffin-embedded Human lung cancer tissue. Antigen Retrieval: Heat mediation was performed in Citrate buffer (pH 6.0) for 20 min. The tissue section was blocked with 10% goat serum. The tissue section was then stained with ARG59543 anti-GRK2 antibody at 1 µg/ml dilution, overnight at 4°C.



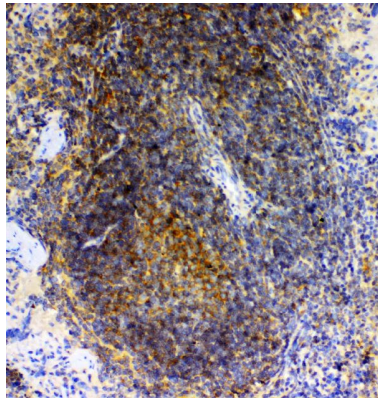
ARG59543 anti-GRK2 antibody WB image

Western blot: 50 µg of samples under reducing conditions. Rat spleen, Rat stomach, Mouse lung, Mouse liver and Mouse pancreas lysates stained with ARG59543 anti-GRK2 antibody at 0.5 µg/ml, overnight at 4°C.



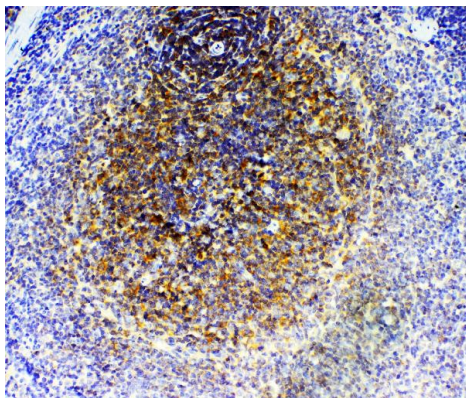
ARG59543 anti-GRK2 antibody FACS image

Flow Cytometry: U87 cells were blocked with 10% normal goat serum and then stained with ARG59543 anti-GRK2 antibody (blue) at 1 µg/10⁶ cells for 30 min at 20°C, followed by incubation with DyLight[®]488 labelled secondary antibody. Isotype control antibody (green) was rabbit IgG (1 µg/10⁶ cells) used under the same conditions. Unlabelled sample (red) was also used as a control.



ARG59543 anti-GRK2 antibody IHC-P image

Immunohistochemistry: Paraffin-embedded Mouse spleen tissue. Antigen Retrieval: Heat mediation was performed in Citrate buffer (pH 6.0) for 20 min. The tissue section was blocked with 10% goat serum. The tissue section was then stained with ARG59543 anti-GRK2 antibody at 1 µg/ml dilution, overnight at 4°C.



ARG59543 anti-GRK2 antibody IHC-P image

Immunohistochemistry: Paraffin-embedded Rat spleen tissue. Antigen Retrieval: Heat mediation was performed in Citrate buffer (pH 6.0) for 20 min. The tissue section was blocked with 10% goat serum. The tissue section was then stained with ARG59543 anti-GRK2 antibody at 1 µg/ml dilution, overnight at 4°C.