

## ARG59535 anti-SMPD2 / nSMase antibody

Package: 100 µl  
Store at: -20°C

### Summary

Product Description	Rabbit Polyclonal antibody recognizes SMPD2 / nSMase
Tested Reactivity	Hu
Tested Application	FACS, WB
Host	Rabbit
Clonality	Polyclonal
Isotype	IgG
Target Name	SMPD2 / nSMase
Species	Human
Immunogen	KLH-conjugated synthetic peptide between aa. 9-35 of Human SMPD2 / nSMase.
Conjugation	Un-conjugated
Alternate Names	ISC1; EC 3.1.4.12; NSMASE1; Lyso-platelet-activating factor-phospholipase C; nSMase; Lyso-PAF-PLC; Sphingomyelin phosphodiesterase 2; N-SMase; NSMASE; Neutral sphingomyelinase

### Application Instructions

Application table	Application	Dilution
	FACS	1:10 - 1:50
	WB	1:1000
Application Note	* The dilutions indicate recommended starting dilutions and the optimal dilutions or concentrations should be determined by the scientist.	
Positive Control	K562	

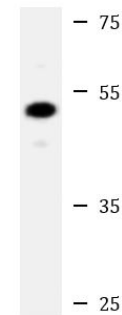
### Properties

Form	Liquid
Purification	Saturated Ammonium Sulfate (SAS) precipitation followed by dialysis against PBS.
Buffer	PBS and 0.09% (W/V) Sodium azide.
Preservative	0.09% (W/V) Sodium azide.
Storage instruction	For continuous use, store undiluted antibody at 2-8°C for up to a week. For long-term storage, aliquot and store at -20°C or below. Storage in frost free freezers is not recommended. Avoid repeated freeze/thaw cycles. Suggest spin the vial prior to opening. The antibody solution should be gently mixed before use.
Note	For laboratory research only, not for drug, diagnostic or other use.

## Bioinformation

Gene Symbol	SMPD2
Gene Full Name	sphingomyelin phosphodiesterase 2, neutral membrane (neutral sphingomyelinase)
Background	This gene encodes a protein which was initially identified as a sphingomyelinase based on sequence similarity between bacterial sphingomyelinases and a yeast protein. Subsequent studies showed that its biological function is less likely to be as a sphingomyelinase and instead as a lysophospholipase. [provided by RefSeq, Oct 2009]
Function	Converts sphingomyelin to ceramide. Hydrolyze 1-acyl-2-lyso-sn-glycero-3-phosphocholine (lyso-PC) and 1-O-alkyl-2-lyso-sn-glycero-3-phosphocholine (lyso-platelet-activating factor). The physiological substrate seems to be Lyso-PAF. [UniProt]
Calculated Mw	48 kDa
Cellular Localization	Membrane; Multi-pass membrane protein. [UniProt]

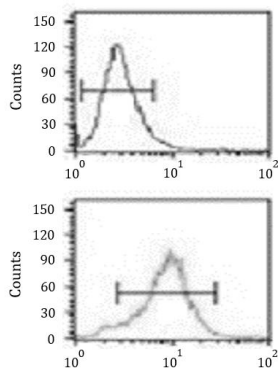
## Images



K562

ARG59535 anti-SMPD2 / nSMase antibody WB image

Western blot: 20 µg of K562 cell lysate stained with ARG59535 anti-SMPD2 / nSMase antibody at 1:1000 dilution.



ARG59535 anti-SMPD2 / nSMase antibody FACS image

Flow Cytometry: NCI-H460 cells stained with ARG59535 anti-SMPD2 / nSMase antibody (bottom histogram) or without primary antibody as control (top histogram), followed by FITC-labelled secondary antibody.