

ARG59513 anti-S100A11 antibody

Package: 50 µl
Store at: -20°C

Summary

Product Description	Rabbit Polyclonal antibody recognizes S100A11
Tested Reactivity	Hu
Tested Application	ICC/IF, IP, WB
Host	Rabbit
Clonality	Polyclonal
Isotype	IgG
Target Name	S100A11
Species	Human
Immunogen	Recombinant fusion protein corresponding to aa. 1-105 of Human S100A11 (NP_005611.1).
Conjugation	Un-conjugated
Alternate Names	S100 calcium-binding protein A11; MLN70; MLN 70; Protein S100-C; HEL-S-43; Metastatic lymph node gene 70 protein; Protein S100-A11; S100C; Calgizzarin

Application Instructions

Predict Reactivity Note	Mouse, Rat								
Application table	<table><thead><tr><th>Application</th><th>Dilution</th></tr></thead><tbody><tr><td>ICC/IF</td><td>1:50 - 1:200</td></tr><tr><td>IP</td><td></td></tr><tr><td>WB</td><td>1:500 - 1:2000</td></tr></tbody></table>	Application	Dilution	ICC/IF	1:50 - 1:200	IP		WB	1:500 - 1:2000
Application	Dilution								
ICC/IF	1:50 - 1:200								
IP									
WB	1:500 - 1:2000								
Application Note	* The dilutions indicate recommended starting dilutions and the optimal dilutions or concentrations should be determined by the scientist.								
Positive Control	BxPC3 and 22RV1								
Observed Size	12 kDa								

Properties

Form	Liquid
Purification	Affinity purified.
Buffer	PBS (pH 7.3), 0.02% Sodium azide and 50% Glycerol.
Preservative	0.02% Sodium azide
Stabilizer	50% Glycerol
Storage instruction	For continuous use, store undiluted antibody at 2-8°C for up to a week. For long-term storage, aliquot and store at -20°C. Storage in frost free freezers is not recommended. Avoid repeated freeze/thaw

cycles. Suggest spin the vial prior to opening. The antibody solution should be gently mixed before use.

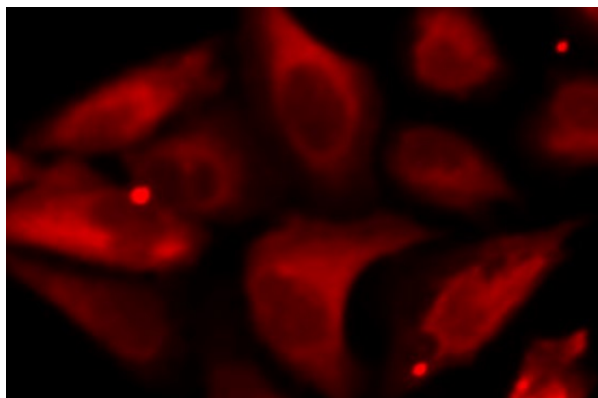
Note

For laboratory research only, not for drug, diagnostic or other use.

Bioinformation

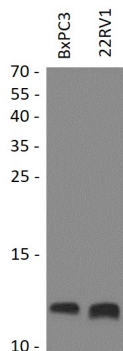
Gene Symbol	S100A11
Gene Full Name	S100 calcium binding protein A11
Background	The protein encoded by this gene is a member of the S100 family of proteins containing 2 EF-hand calcium-binding motifs. S100 proteins are localized in the cytoplasm and/or nucleus of a wide range of cells, and involved in the regulation of a number of cellular processes such as cell cycle progression and differentiation. S100 genes include at least 13 members which are located as a cluster on chromosome 1q21. This protein may function in motility, invasion, and tubulin polymerization. Chromosomal rearrangements and altered expression of this gene have been implicated in tumor metastasis. [provided by RefSeq, Jul 2008]
Function	Facilitates the differentiation and the cornification of keratinocytes. [UniProt]
Calculated Mw	12 kDa
PTM	Phosphorylation at Thr-10 by PRKCA significantly suppresses homodimerization and promotes association with NCL/nucleolin which induces nuclear translocation. [UniProt]
Cellular Localization	Cytoplasm. Nucleus. [UniProt]

Images



ARG59513 anti-S100A11 antibody ICC/IF image

Immunofluorescence: U2OS cells stained with ARG59513 anti-S100A11 antibody.



ARG59513 anti-S100A11 antibody WB image

Western blot: 25 µg of BxPC3 and 22RV1 cell lysates stained with ARG59513 anti-S100A11 antibody at 1:1000 dilution.

ARG59513 anti-S100A11 antibody WB image

Western blot: 25 µg of extracts from normal (control) and S100A11 knockout (KO) HeLa cells, using ARG59513 anti-S100A11 antibody at 1:1000 dilution.

