

## ARG59500 anti-SMPD2 / nSMase antibody

Package: 100 µl  
Store at: -20°C

### Summary

Product Description	Rabbit Polyclonal antibody recognizes SMPD2 / nSMase
Tested Reactivity	Ms, Rat
Tested Application	WB
Host	Rabbit
Clonality	Polyclonal
Isotype	IgG
Target Name	SMPD2 / nSMase
Species	Human
Immunogen	Synthetic peptide within aa. 150-250 of Human SMPD2 / nSMase (NP_003071.2).
Conjugation	Un-conjugated
Alternate Names	ISC1; EC 3.1.4.12; NSMASE1; Lyso-platelet-activating factor-phospholipase C; nSMase; Lyso-PAF-PLC; Sphingomyelin phosphodiesterase 2; N-SMase; NSMASE; Neutral sphingomyelinase

### Application Instructions

Application table	Application	Dilution
	WB	1:500 - 1:2000
Application Note	* The dilutions indicate recommended starting dilutions and the optimal dilutions or concentrations should be determined by the scientist.	
Positive Control	Rat liver	
Observed Size	48 kDa	

### Properties

Form	Liquid
Purification	Affinity purified.
Buffer	PBS (pH 7.3), 0.02% Sodium azide and 50% Glycerol.
Preservative	0.02% Sodium azide
Stabilizer	50% Glycerol
Storage instruction	For continuous use, store undiluted antibody at 2-8°C for up to a week. For long-term storage, aliquot and store at -20°C. Storage in frost free freezers is not recommended. Avoid repeated freeze/thaw cycles. Suggest spin the vial prior to opening. The antibody solution should be gently mixed before use.
Note	For laboratory research only, not for drug, diagnostic or other use.

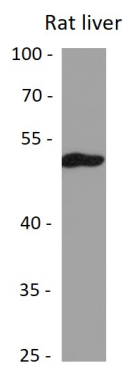
## Bioinformation

---

Gene Symbol	SMPD2
Gene Full Name	sphingomyelin phosphodiesterase 2, neutral membrane (neutral sphingomyelinase)
Background	This gene encodes a protein which was initially identified as a sphingomyelinase based on sequence similarity between bacterial sphingomyelinases and a yeast protein. Subsequent studies showed that its biological function is less likely to be as a sphingomyelinase and instead as a lysophospholipase. [provided by RefSeq, Oct 2009]
Function	Converts sphingomyelin to ceramide. Hydrolyze 1-acyl-2-lyso-sn-glycero-3-phosphocholine (lyso-PC) and 1-O-alkyl-2-lyso-sn-glycero-3-phosphocholine (lyso-platelet-activating factor). The physiological substrate seems to be Lyso-PAF. [UniProt]
Calculated Mw	48 kDa
Cellular Localization	Membrane; Multi-pass membrane protein. [UniProt]

## Images

---



ARG59500 anti-SMPD2 / nSMase antibody WB image

Western blot: 25 µg of Rat liver lysate stained with ARG59500 anti-SMPD2 / nSMase antibody at 1:3000 dilution.